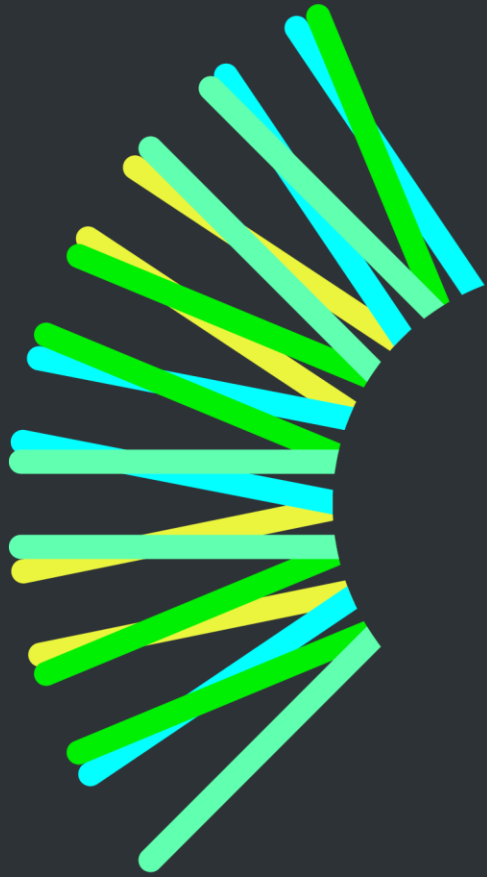




Project Execution Plan Modification

Community Consultative Committee
July 2021



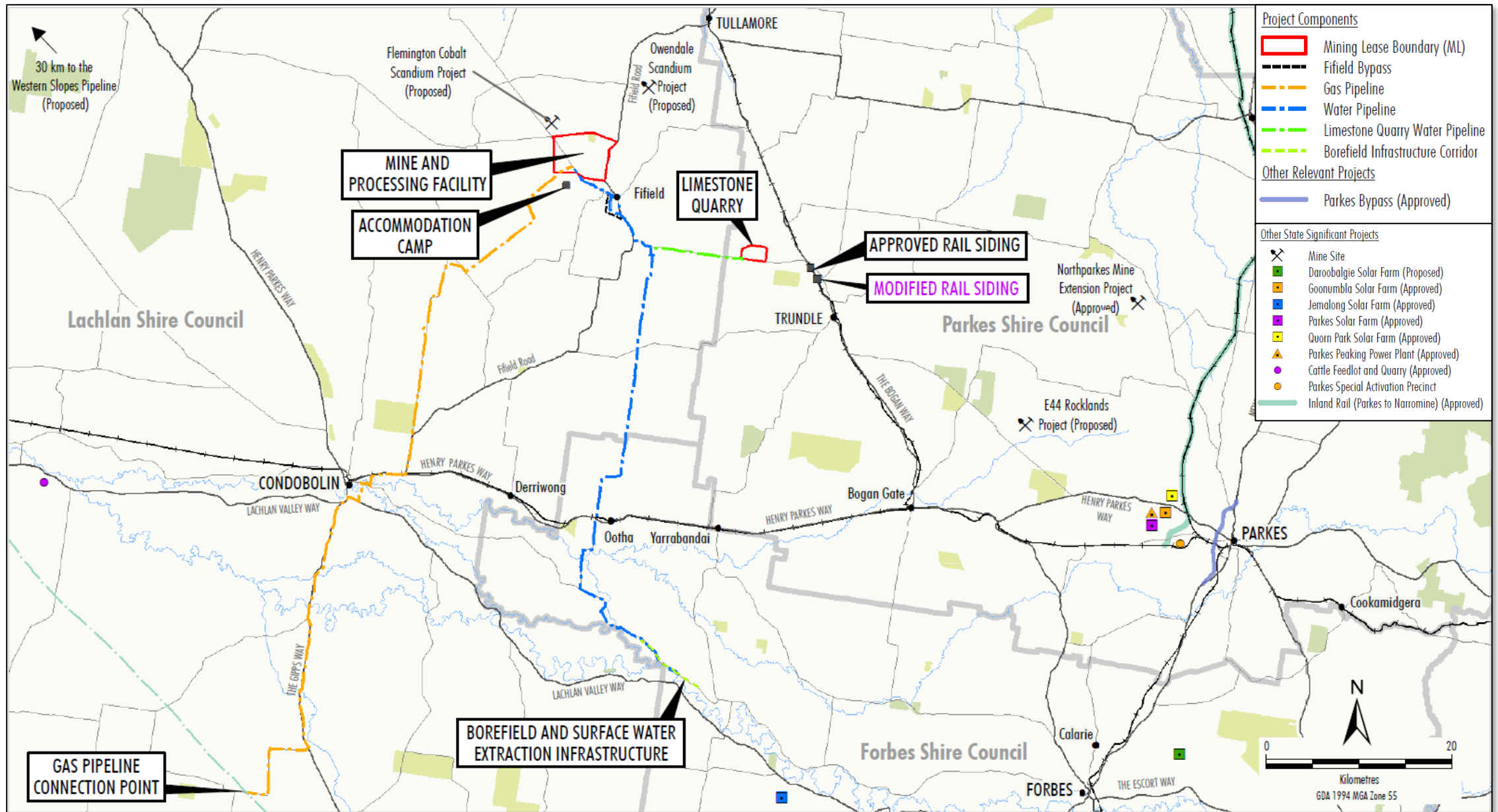


Contents

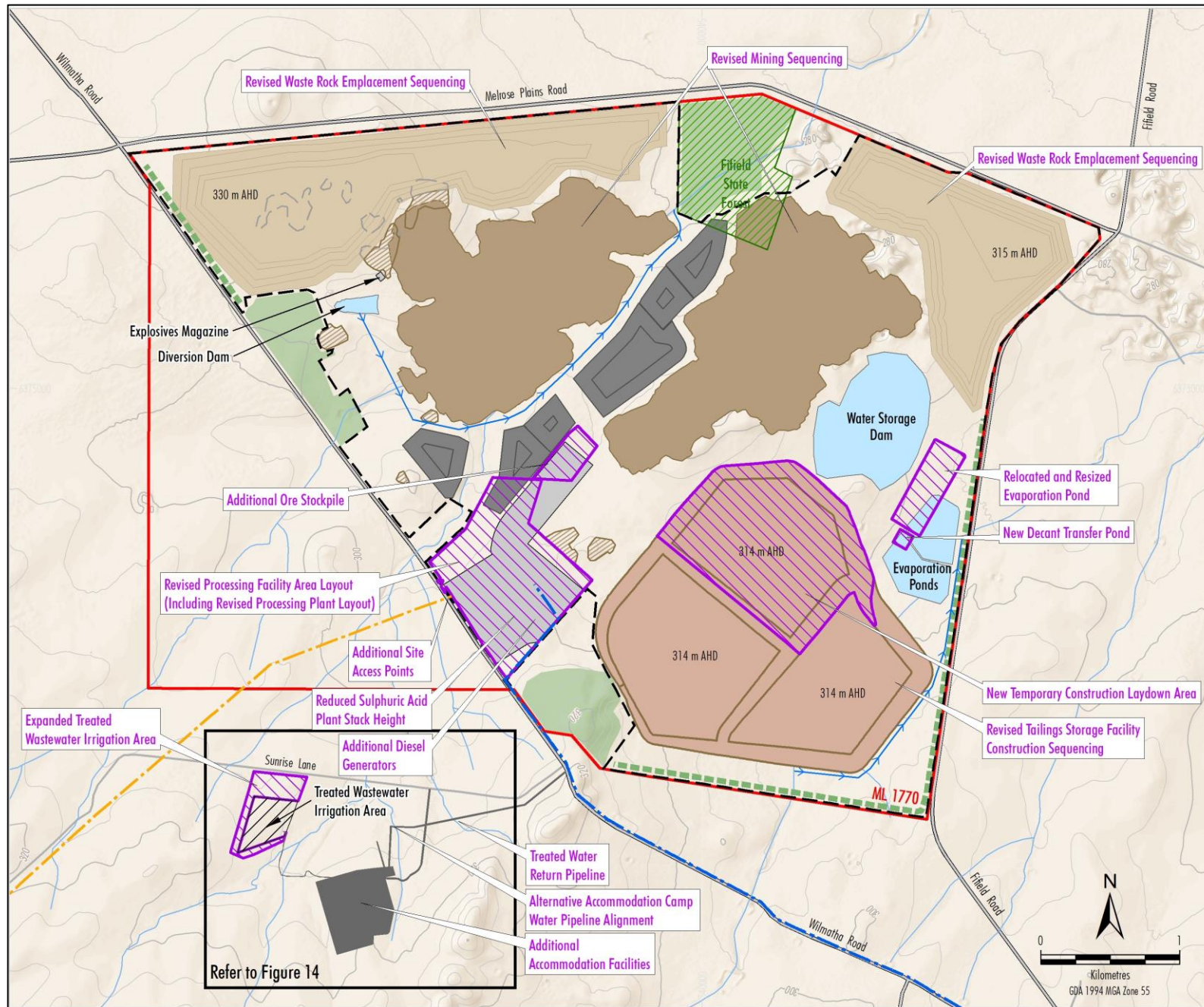
- 1 Project Execution Plan Modification – Overview
- 2 Environmental Assessment Outcomes
- 3 Public Exhibition
- 4 CCC Member Questions

Project Execution Plan Modification - Overview





Mine and Processing Facility



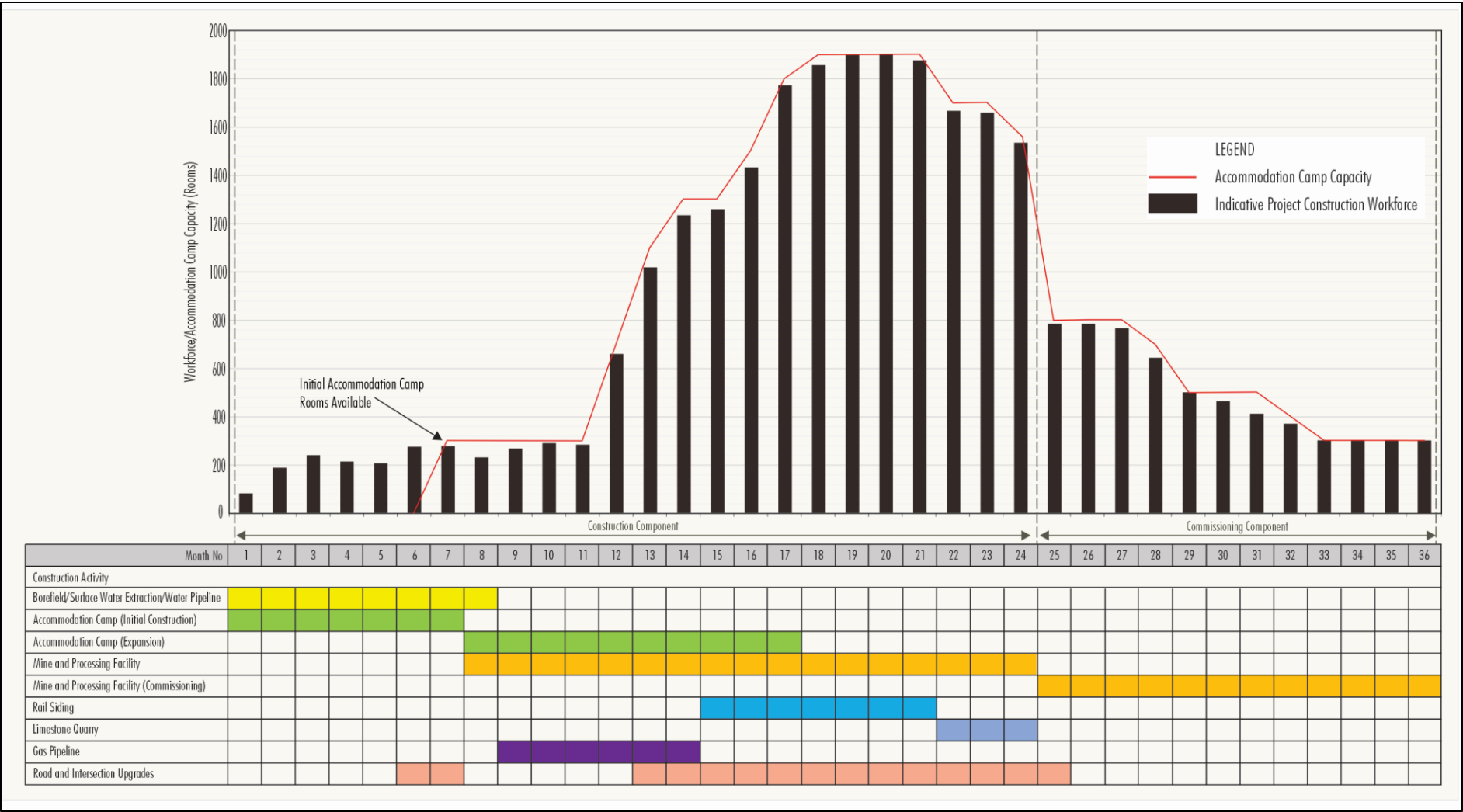
Accommodation Camp

Construction Phase

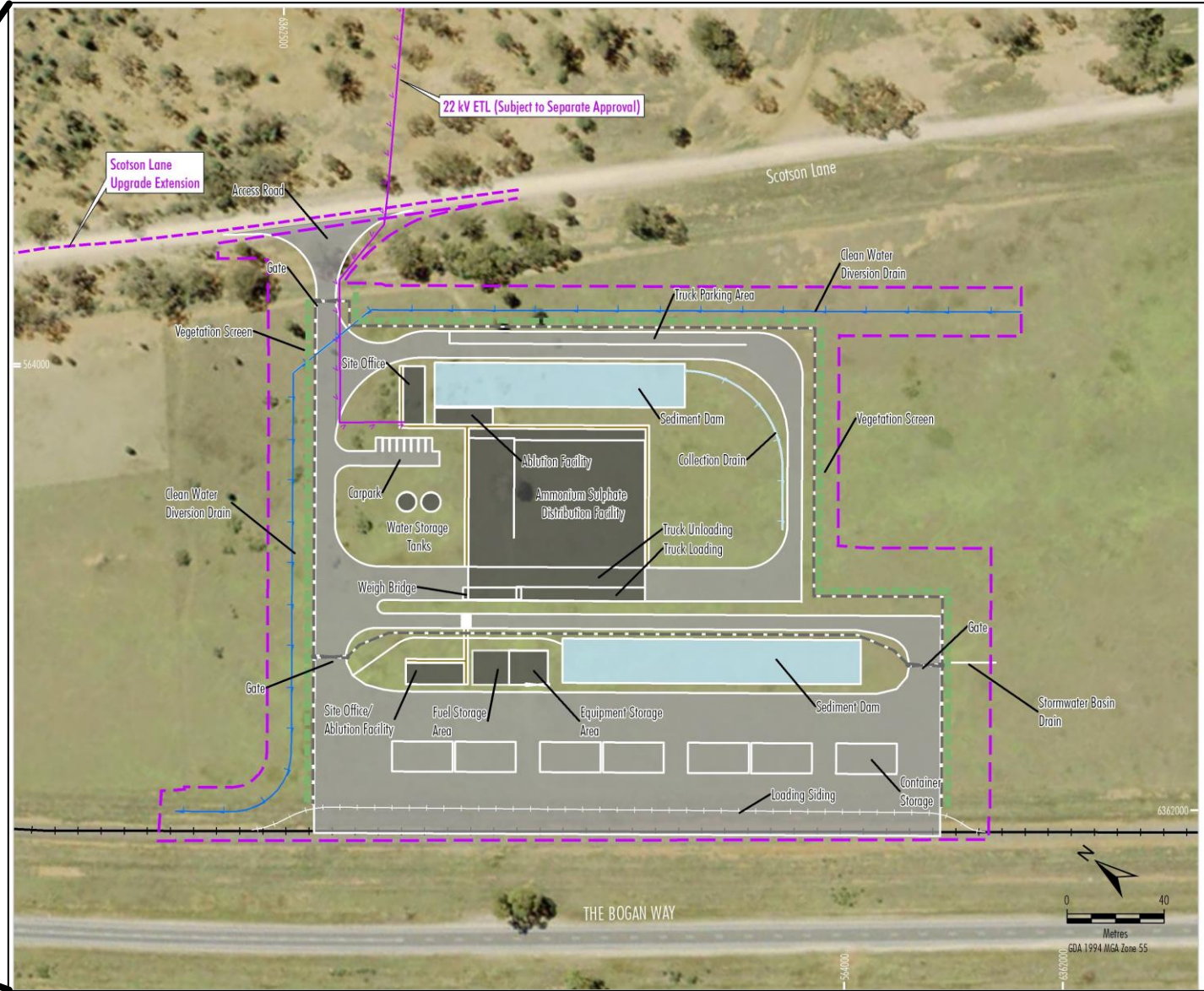
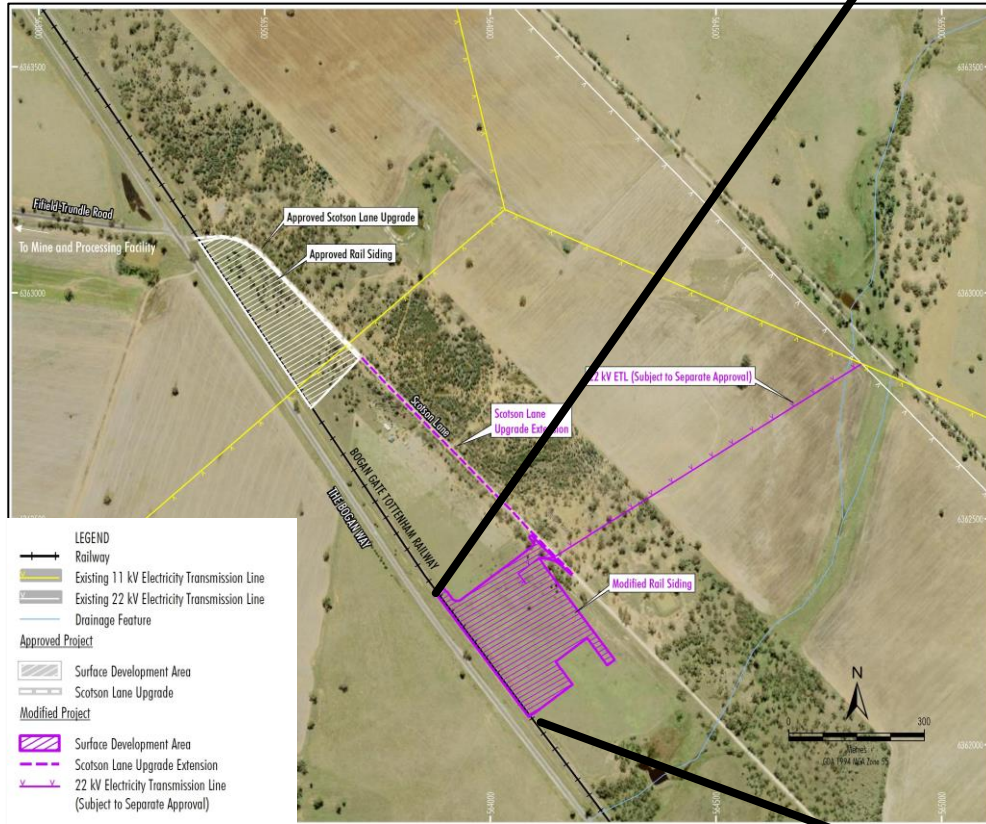
- › Increased peak workforce from ~1,000 to ~1,900 personnel.
- › Increased accommodation camp capacity from 1,300 to 1,900 personnel.
- › Increased duration from 2 to 3 years.

Operational Phase

- › Operational workforce increase from 335 to 340
- › No change to camp capacity or operation.



Rail Siding



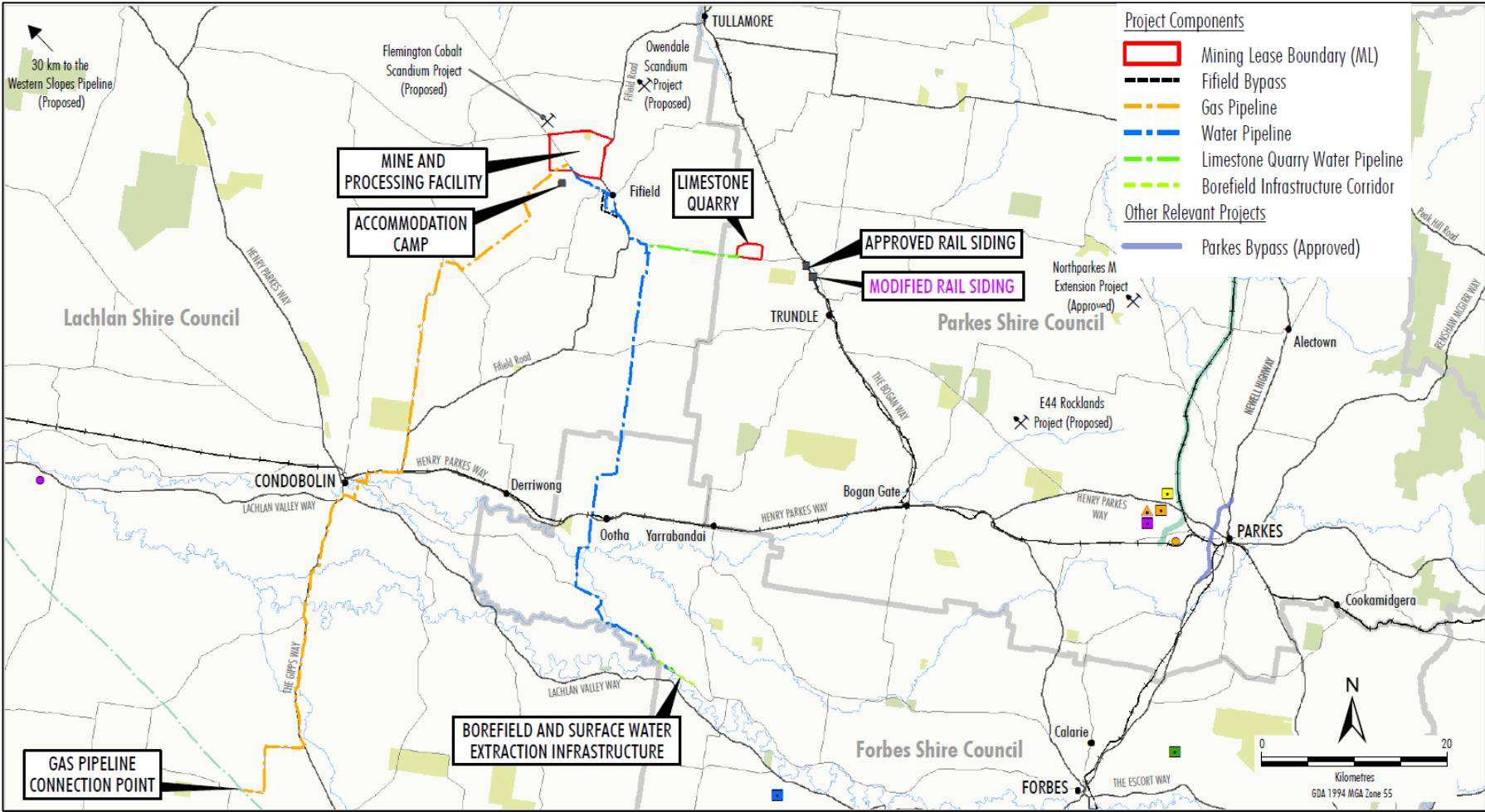
Road Transport Activities

Construction Phase

- › Changes to vehicle movements associated with the increased construction phase accommodation camp capacity and changes to heavy vehicle delivery requirements

Operational Phase

- › Changes to heavy vehicle movements associated with revision to processing plant reagents
- › Changes to heavy vehicle movements to and from the rail siding associated with the transport of metal sulphate and ammonium sulphate products.



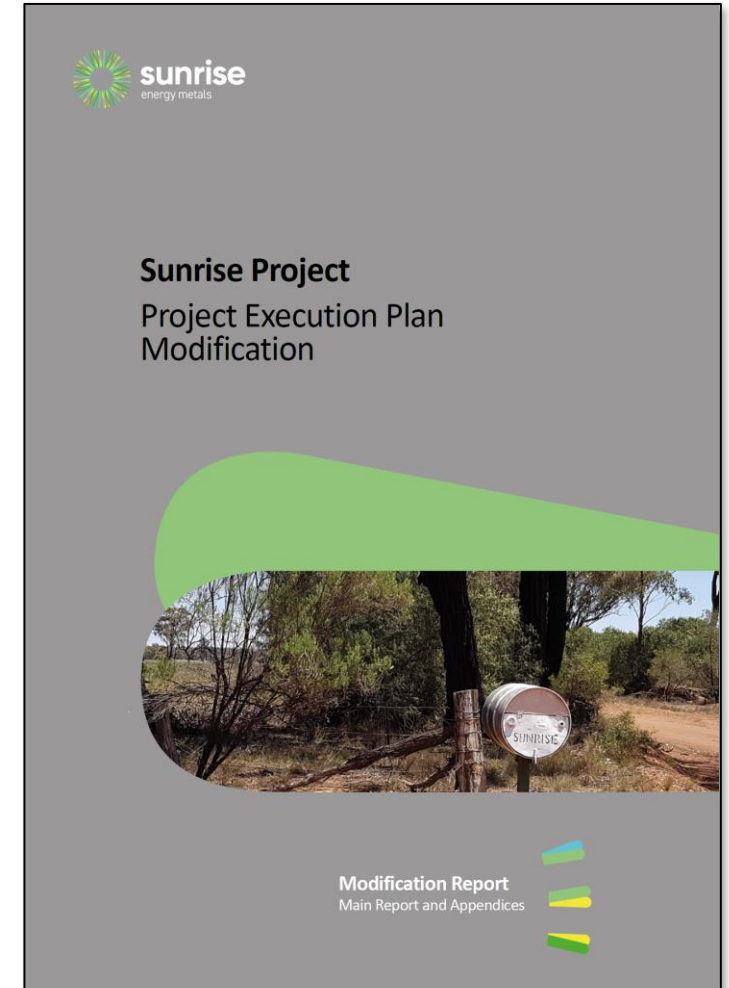
Environmental Assessment Outcomes



Environmental Assessment Outcomes

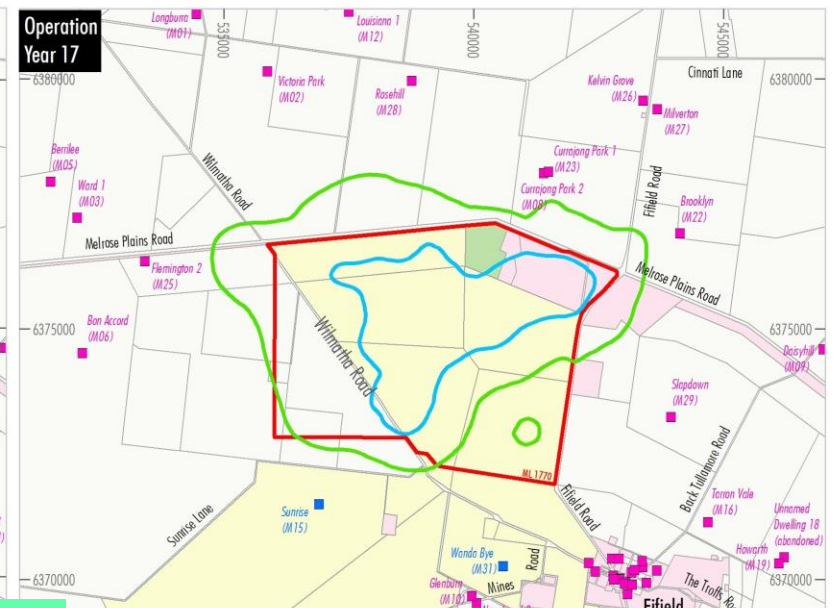
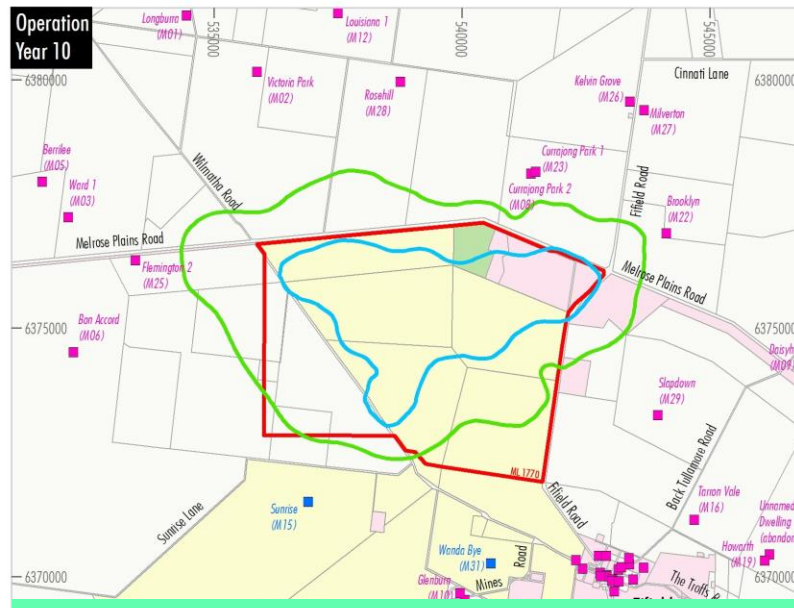
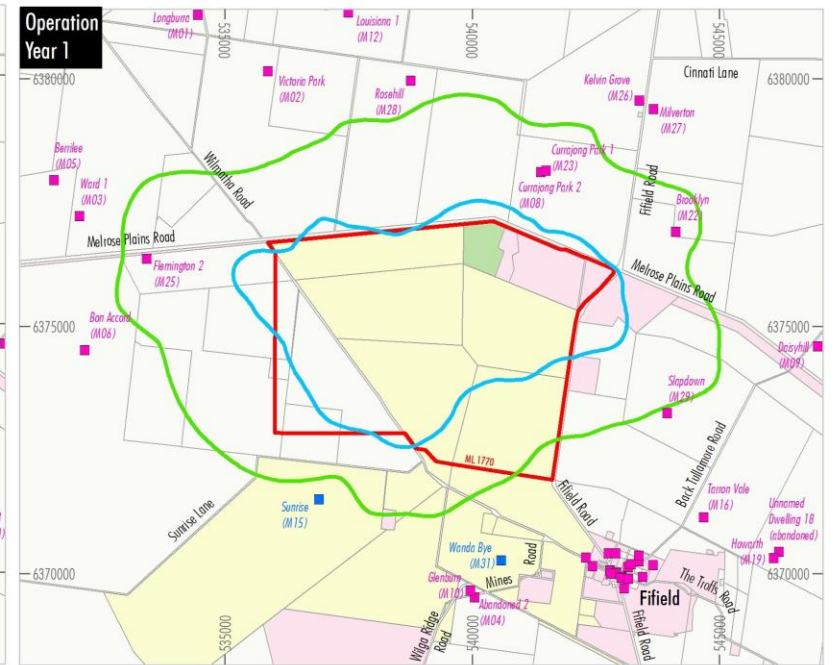
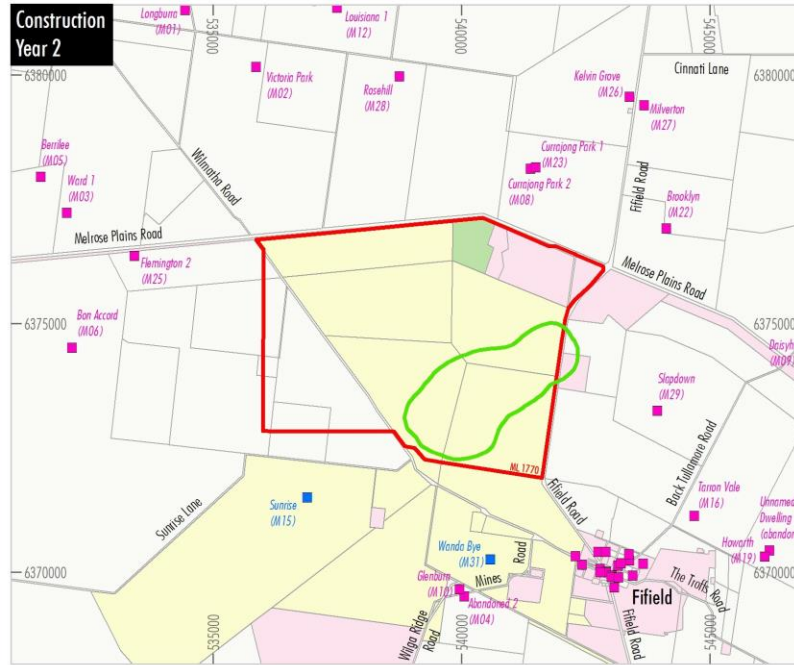
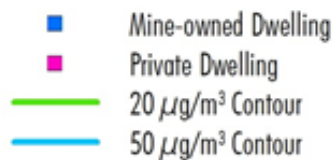
Specialist Studies

- › A number of specialist studies have been undertaken, including:
 - Air Quality Assessment (Jacobs)
 - Noise Assessment (Renzo Tonin)
 - Surface Water Assessment (HEC)
 - Road Transport Assessment (TTPP)
 - Preliminary Hazard Analysis (Pinnacle Risk Management)
 - Biodiversity Review (Biodiversity Australia)
 - Aboriginal Cultural Heritage Assessment (Landskape)
 - Land Contamination Assessment (Ground Doctor)
 - Social Impact Review (Square Peg Social Performance)
 - Environmental Review of Rail Siding Electricity Transmission Line (SEM)



Air Quality

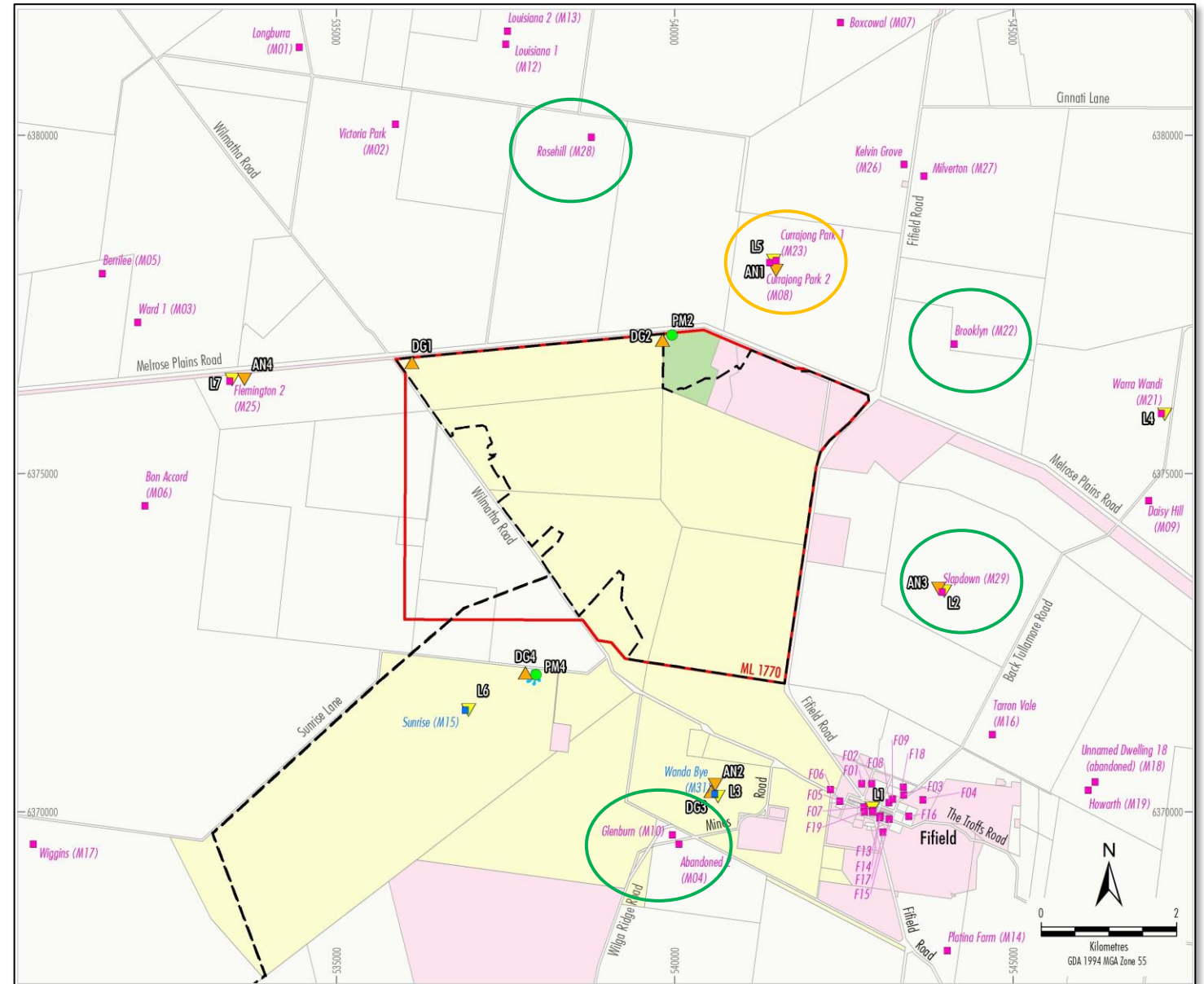
- › Air Quality Assessment prepared in accordance with the NSW EPA Approved Methods
- › On-site meteorological data adopted in the modelling
- › Worst case mine site and rail siding construction and operational scenarios modelled:
- › No exceedances of relevant criteria predicted, including:
 - › Dust (PM_{10} , $PM_{2.5}$, depositional dust, TSP)
 - › Gaseous emissions (SO_2 , CO, NO_2 , H_2SO_4 , VOCs)



Maximum 24-hour PM_{10} Concentrations

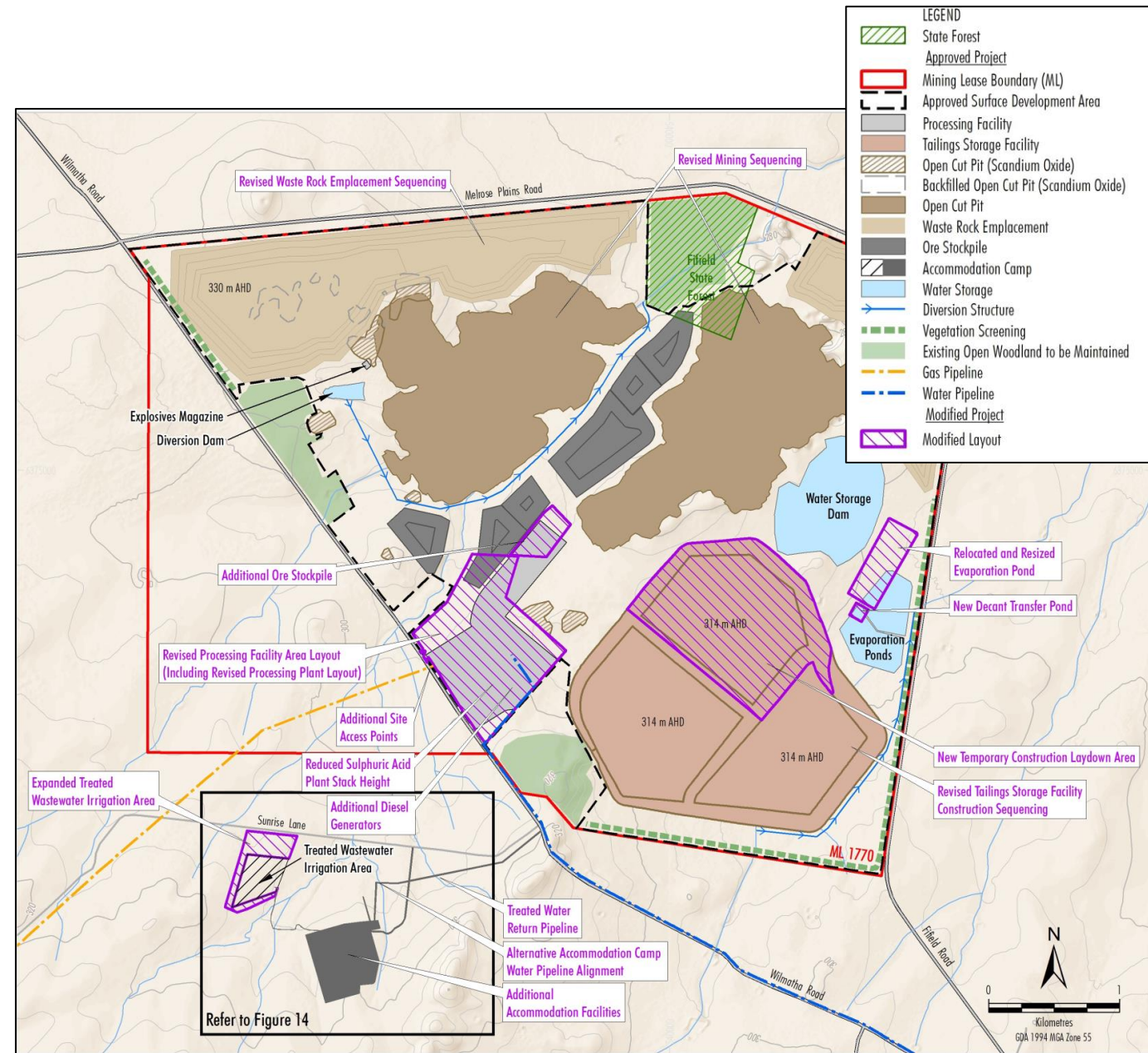
Noise

- › Noise Assessment prepared in accordance with the NPfI
- › On-site meteorological data adopted in the modelling
- › Adverse meteorological conditions considered in accordance with NPfI – inversion and noise enhancing winds in the evening
- › Worst case mine site and rail siding construction and operational scenarios modelled
- › Mine and processing facility (operations):
 - › **Negligible Exceedance** – Five receivers (Rose Hill, Glenburn, Slapdown, Brooklyn, Abandoned 2)
 - › **Moderate Exceedance** – Two receivers (Currajong Park 1 & 2)
- › No exceedances of relevant criteria predicted at rail siding



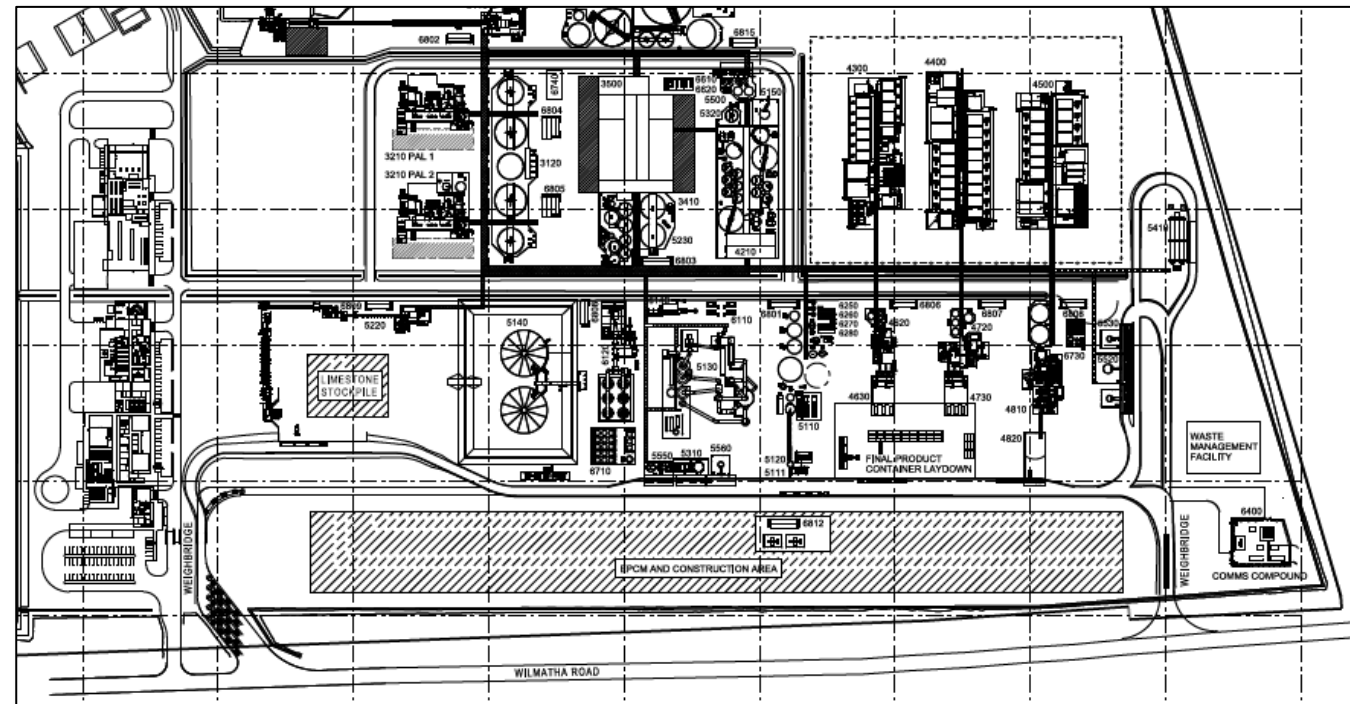
Surface Water

- › The existing water balance was updated to incorporate the Modification
- › The water balance modelling demonstrates that the modified site water management system has sufficient capacity and flexibility to accommodate a wide range of climate scenarios.
- › No overflows are predicted from the tailings storage facility and other mine water dams over the Project life.
- › The predicted average and maximum annual off-site water requirements for the Project would not significantly change.
- › Potential surface water impacts (flows, water quality, flooding) associated with the Modification would be low risk.



Road Transport

- › Construction phase traffic would significantly reduce – introduction of shuttle buses
- › Operations phase traffic would generally be unchanged
- › Construction and operational phase truck traffic in Trundle main street would reduce
- › No significant impacts to road performance, capacity, efficiency or safety arising as a result of the traffic associated with the Modification
- › The road and intersection upgrades required by Development Consent (DA 374-11-00) and the VPA are appropriate – the approved Scotson Lane upgrade would be extended to the modified rail siding access
- › The road maintenance contributions required by Development Consent (DA 374-11-00) and the VPA are appropriate
- › No exceedances of road noise criteria predicted



Hazards and Risks

- › A Preliminary Hazard Assessment (PHA) undertook a risk-based assessment for credible events that have the potential for off-site impacts
- › PHA concluded the modified Project is compliant with all NSW Government risk criteria
- › Societal risk, area cumulative risk, propagation risk, transport risk and environmental risk are also considered to be acceptable
- › Pre-construction and pre-commissioning hazard studies to be completed and submitted to DPIE for approval

Biodiversity (Rail Siding Only)

- › Potential biodiversity impacts associated with the relocated rail siding
- › Reduction (0.34 ha) in clearance of native vegetation
- › No increase in impacts on biodiversity values
- › NSW regulator (BCS) has indicated that it agrees with this conclusion



Aboriginal Cultural Heritage (Rail Siding Only)

- › Aboriginal Cultural Heritage Assessment (ACHA) was prepared in accordance with the relevant Heritage NSW guidelines.
- › Survey of modified rail siding undertaken on 23 February 2021 in consultation with Registered Aboriginal Parties (RAPs) – no Aboriginal Heritage sites recorded.
- › RAP review period of draft ACHA ended 19 April with no comments received.



Social Impacts

- › Social Impact Review included:
 - Characterisation of existing social environment (population, economic indicators, housing and community infrastructure).
 - Overview of consultation with the PSC, LSC and FSC.
 - Identification and assessment of potential incremental social impacts associated with the Modification.
 - Review of appropriateness of approved mitigation measures.
- › The Modification would have some positive social impacts (e.g. creation of additional employment opportunities during construction)
- › The potential negative social impacts would be of low significance (e.g. demand for housing during initial construction period prior to accommodation camp ready)

Public Exhibition



Public Exhibition

- › Modification was submitted to DPIE on Wednesday 30 June 2021
- › Public exhibition commenced yesterday (Tuesday 27th July) for a period of two weeks (until Monday 9th August)
- › Public notification – local newspapers (Condobolin, Parkes and Forbes)

PUBLIC NOTICES

PUBLIC NOTICE PROPOSED MODIFICATION TO SUNRISE PROJECT

ENVIRONMENTAL PLANNING AND ASSESSMENT ACT 1979 (NSW)
PART 4 DEVELOPMENT CONSENT (DA 374-11-00)

SRL Ops Pty Ltd, a wholly owned subsidiary of Sunrise Energy Metals, is authorised to carry out the Sunrise Project under Development Consent (DA 374-11-00), which was granted under the New South Wales (NSW) *Environmental Planning and Assessment Act, 1979* (EP&A Act).

The Sunrise Project, which is located near Fifield NSW, includes a mine and processing facility; limestone quarry; rail siding; borefield, surface water extraction infrastructure and water pipeline; gas pipeline; and associated transport activities and transport infrastructure.

Development Consent (DA 374-11-00) has been modified on six occasions since being granted in 2001.

On Wednesday, 30 June 2021, SRL Ops Pty Ltd lodged a modification application for the **Proposed Project Execution Plan Modification** (the Proposed Modification) with the NSW Department of Planning, Industry and Environment seeking approval to modify the State Significant Development consent pursuant to section 4.55(2) of the EP&A Act. The consent authority for the Proposed Modification will be the NSW Minister for Planning and Public Spaces.

The Proposed Modification includes a number of changes to the approved mine and processing facility, accommodation camp, rail siding and road transport activities to allow for the optimisation of the construction and operation of the Project.

The application for the Proposed Modification and accompanying documents can be accessed on the NSW Major Projects Planning Portal Website (<https://www.planningportal.nsw.gov.au/major-projects>) by using the search term "Sunrise Nickel/Cobalt Mine"

For further information relating to the Proposed Modification, please contact:

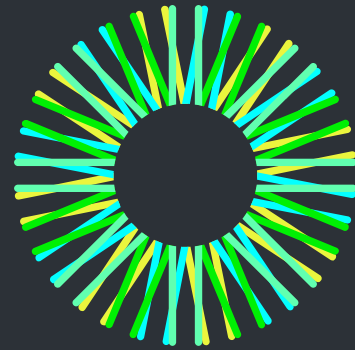
Bronwyn Flynn
Environment, Approvals & Community Lead
Sunrise Energy Metals
bfflynn@sunriseem.com



CCC Member Questions



Thank you



sunrise
energy metals