

sunrise
energy metals

2021 ENVIRONMENTAL MONITORING RESULTS

AIR QUALITY - JUNE

Published Date: 27 July 2021

Premises:
Sunrise Project
Wilmatha Road
Fifield, NSW, 2875

[Environment Protection Licence #21146](#)

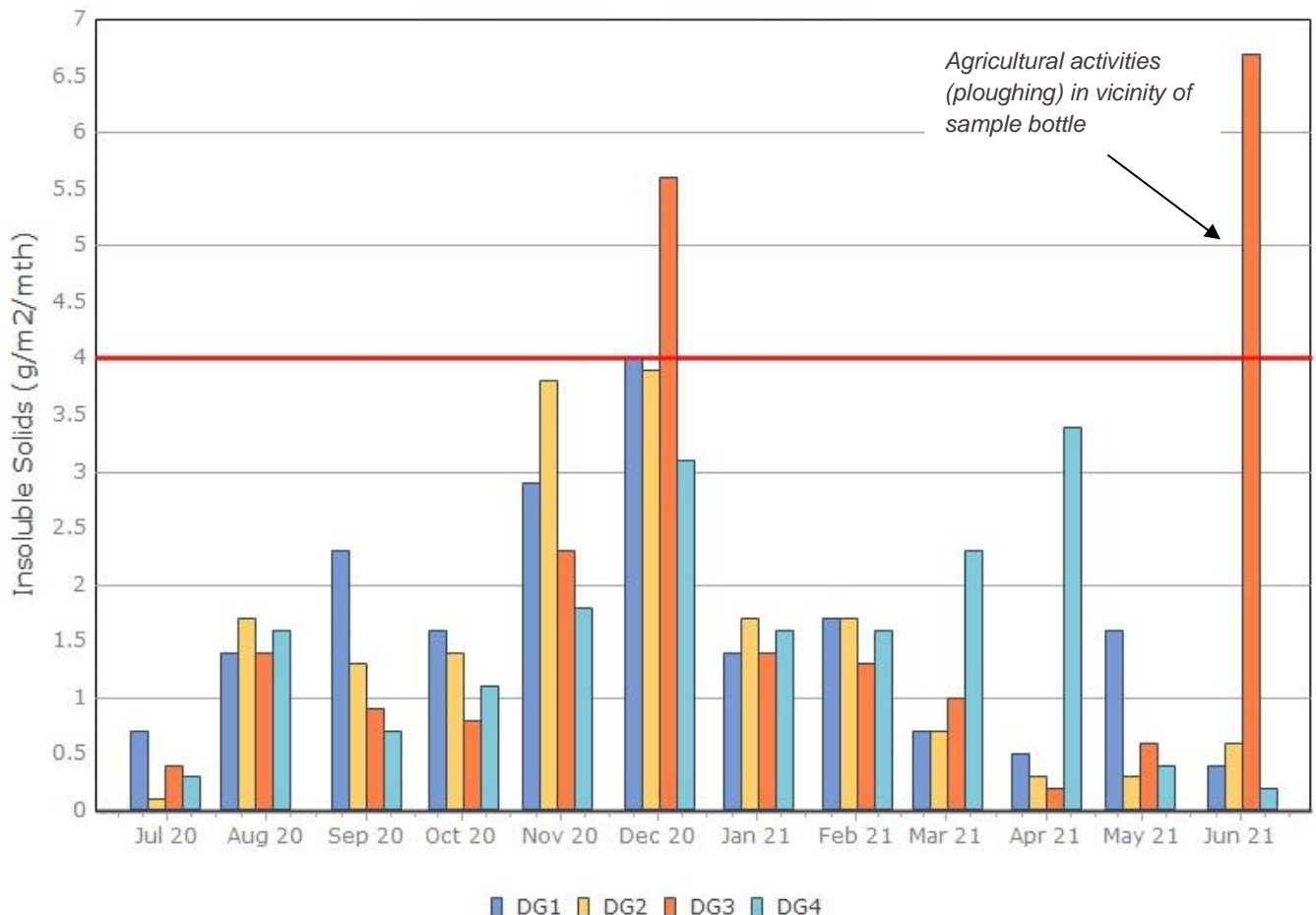
Dust Deposition

Monitoring Points:

- DG1- North West Corner of Mining Lease 1770
- DG2- Northern boundary of Mining Lease 1770
- DG3- Company Owned Residence South of Mining Lease 1770
- DG4- Adjacent the Accommodation Camp South West of Mining Lease 1770

Month	Sample Period	Results		Insoluble Solids (g/m ² /mth)			
		Received	Published	DG1	DG2	DG3	DG4
January	1/1/21 - 1/2/21	12/2/21	4/3/21	2.0	0.8	1.7	2.7
February	1/2/21 - 1/3/21	15/3/21	24/3/21	1.7	1.7	1.3	1.6
March	1/3/21 - 1/4/21	15/4/21	20/4/21	0.7	0.7	1.0	2.3
April	1/4/21 - 30/4/21	13/5/21	28/5/21	0.5	0.3	0.2	3.4
May	30/4/21 - 1/6/21	10/6/21	23/5/21	1.6	0.3	0.6	0.4
June	1/6/21 - 1/7/21	15/07/21	19/07/21	0.4	0.6	6.7	0.2
July							
August							
September							
October							
November							
December							
Average (Mean)				1.15	0.73	1.92	1.77
Median				1.15	0.65	1.15	1.95
Maximum				2	1.7	6.7	3.4
Minimum				0.4	0.3	0.2	0.2

Figure 1. Dust Deposition over the last 12 months with guideline criteria



Particulate Matter

Monitoring Points:

- PM2- Northern boundary of Mining Lease 1770
- PM4- Adjacent the Accommodation Camp South West of Mining Lease 1770

Figure 2. PM10 (24 hr Average) with Compliance Criteria – June 2021

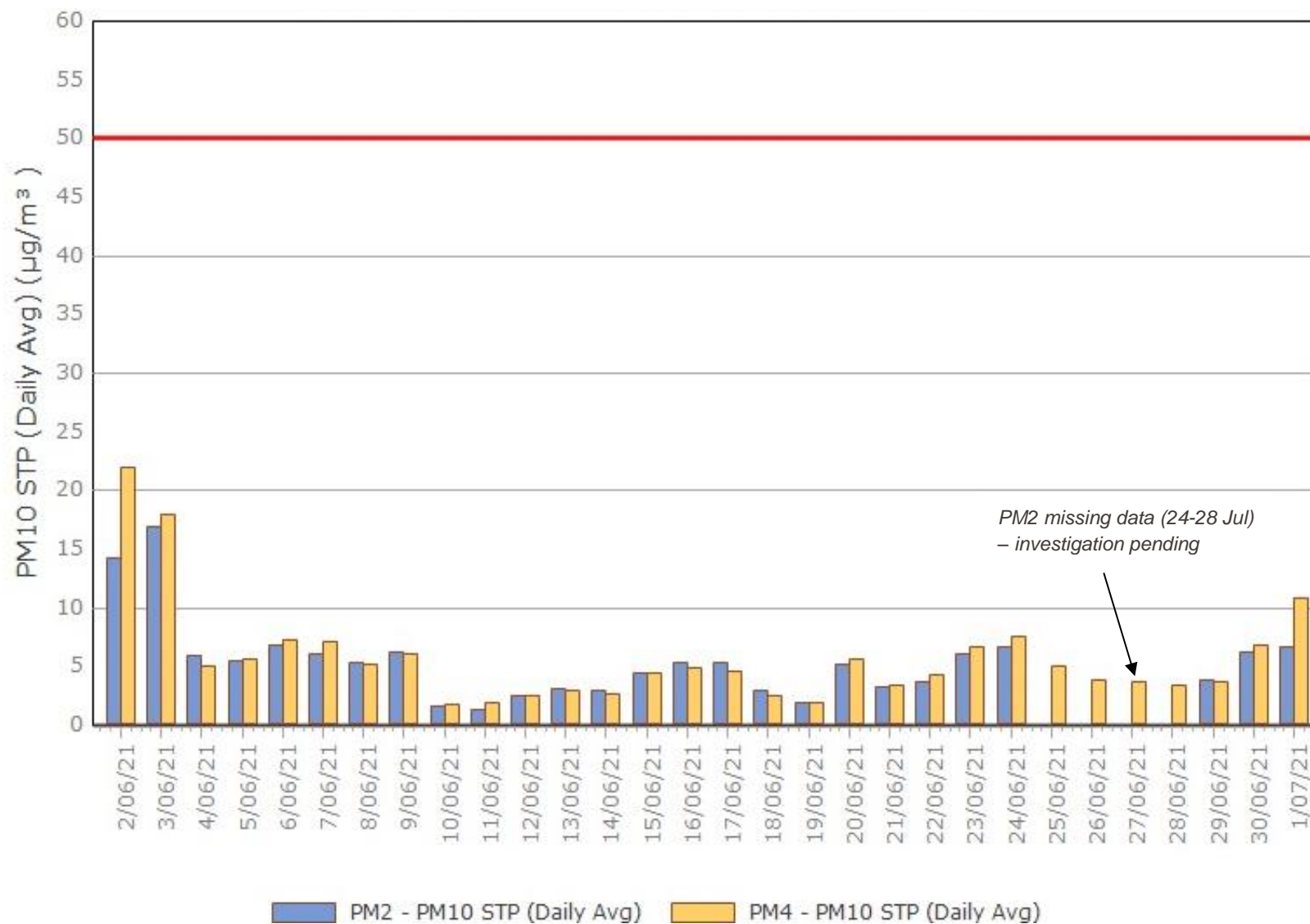
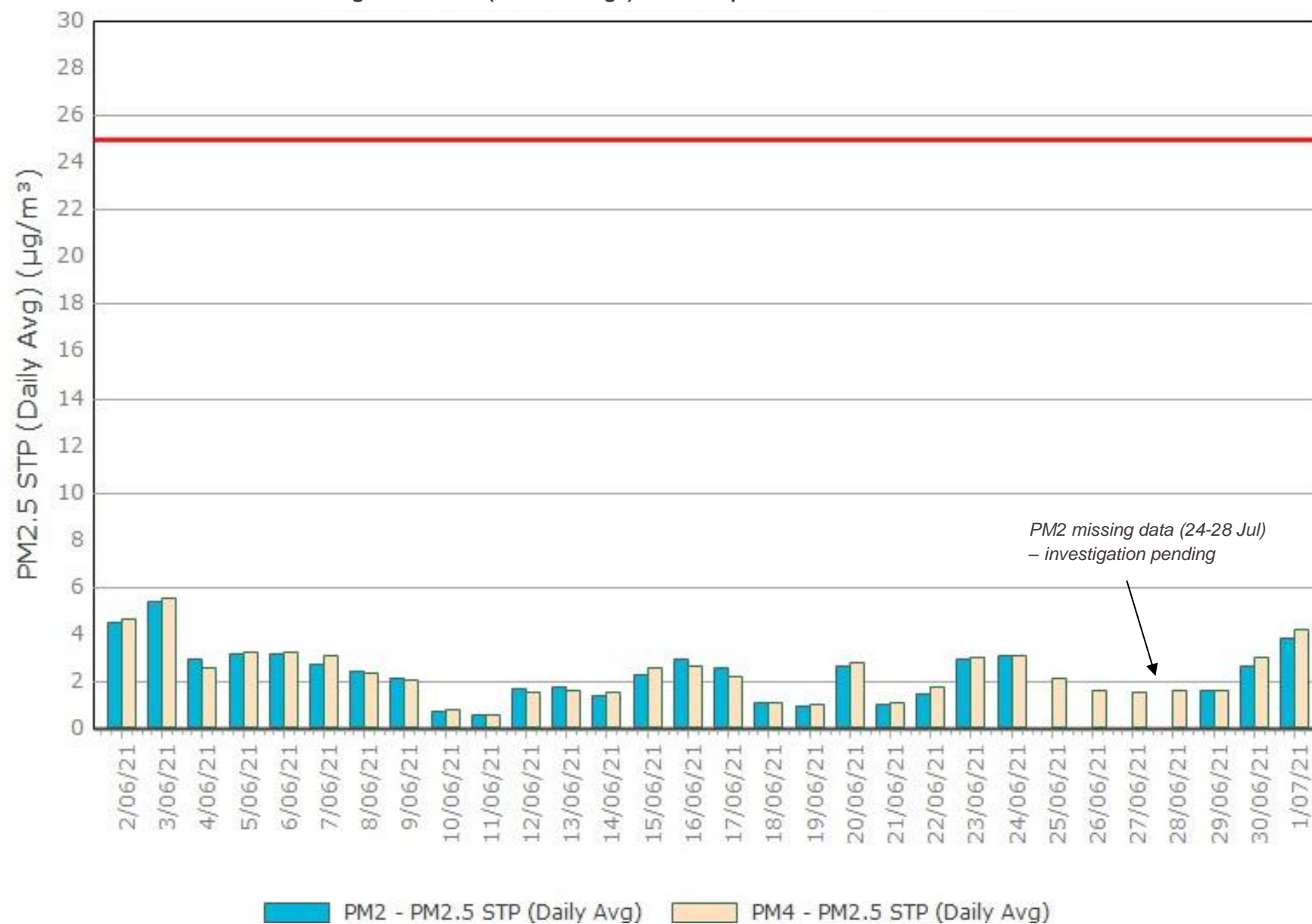


Figure 3. PM2.5 (24 hr Average) with Compliance Criteria – June 2021

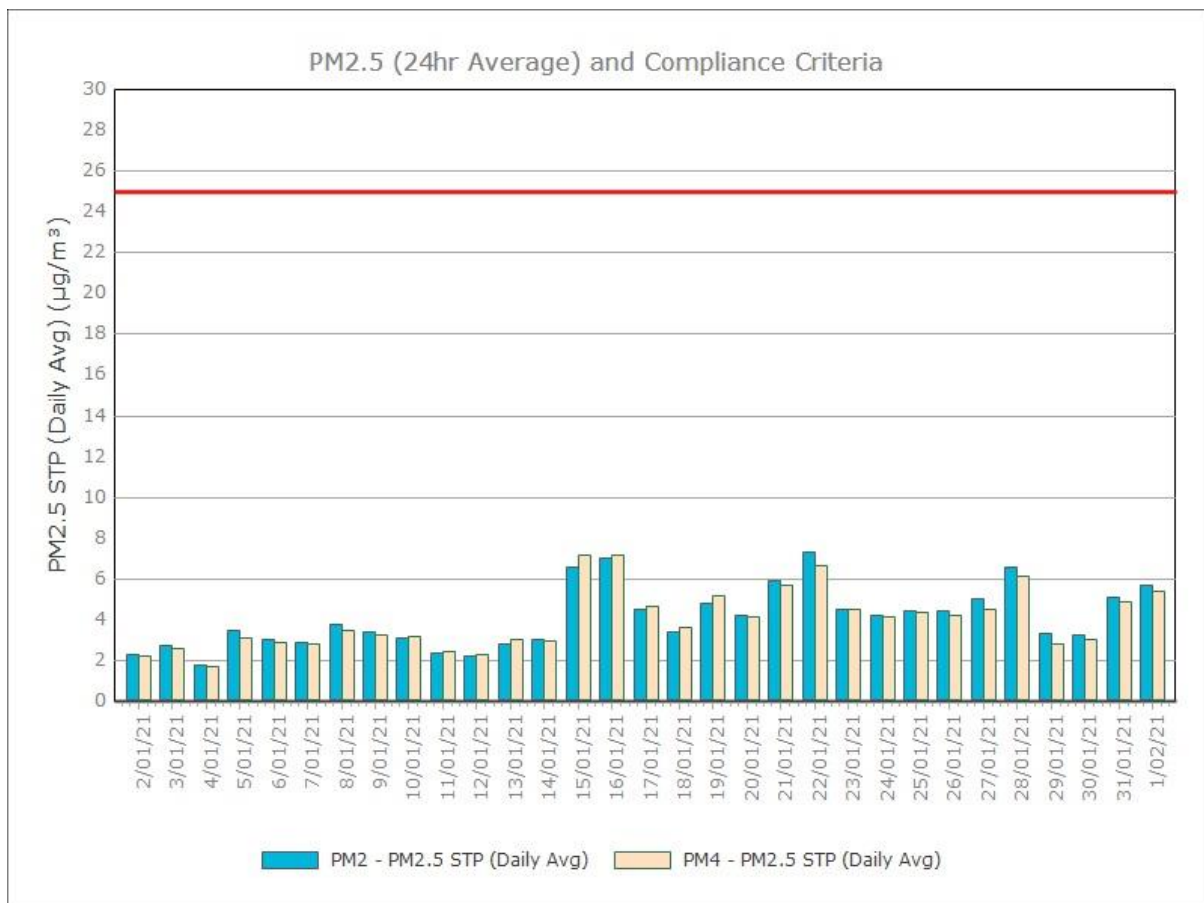
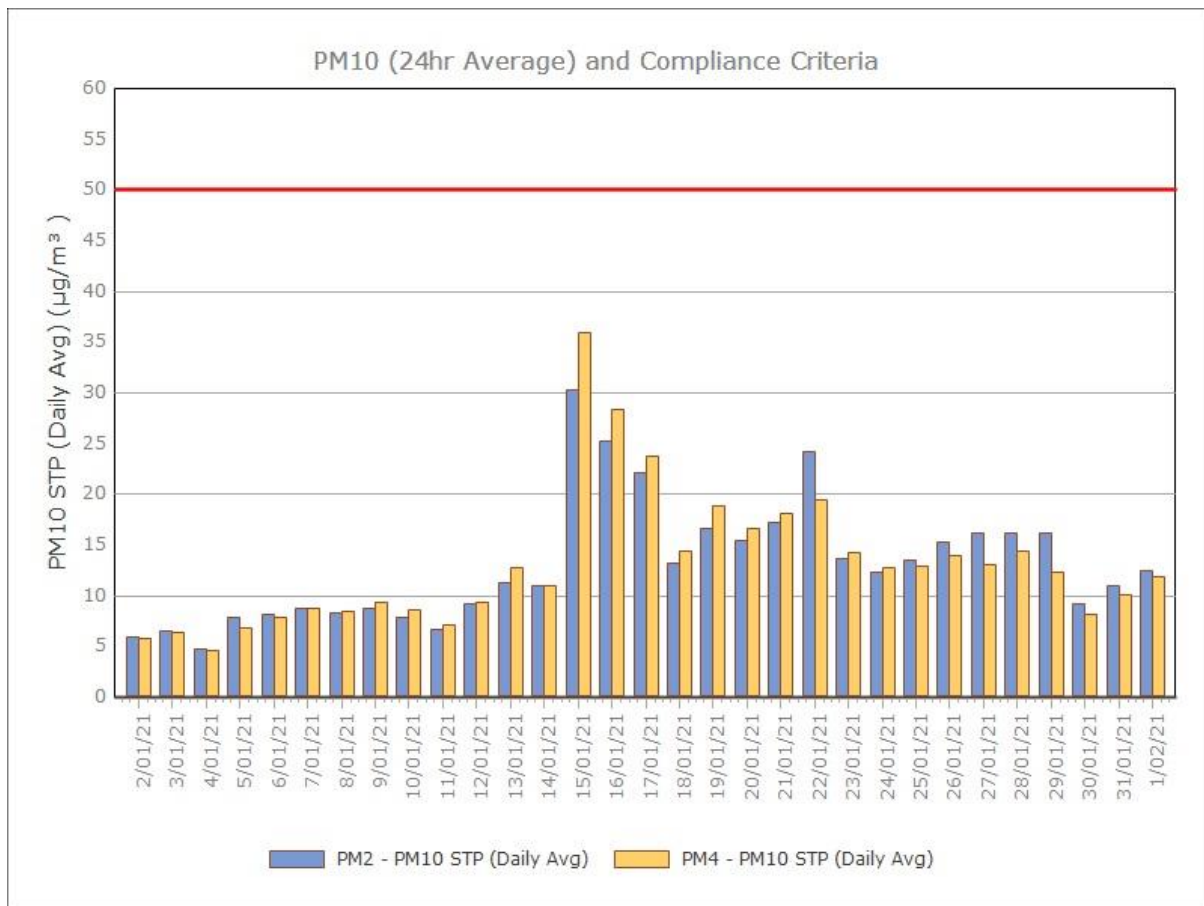


APPENDIX:

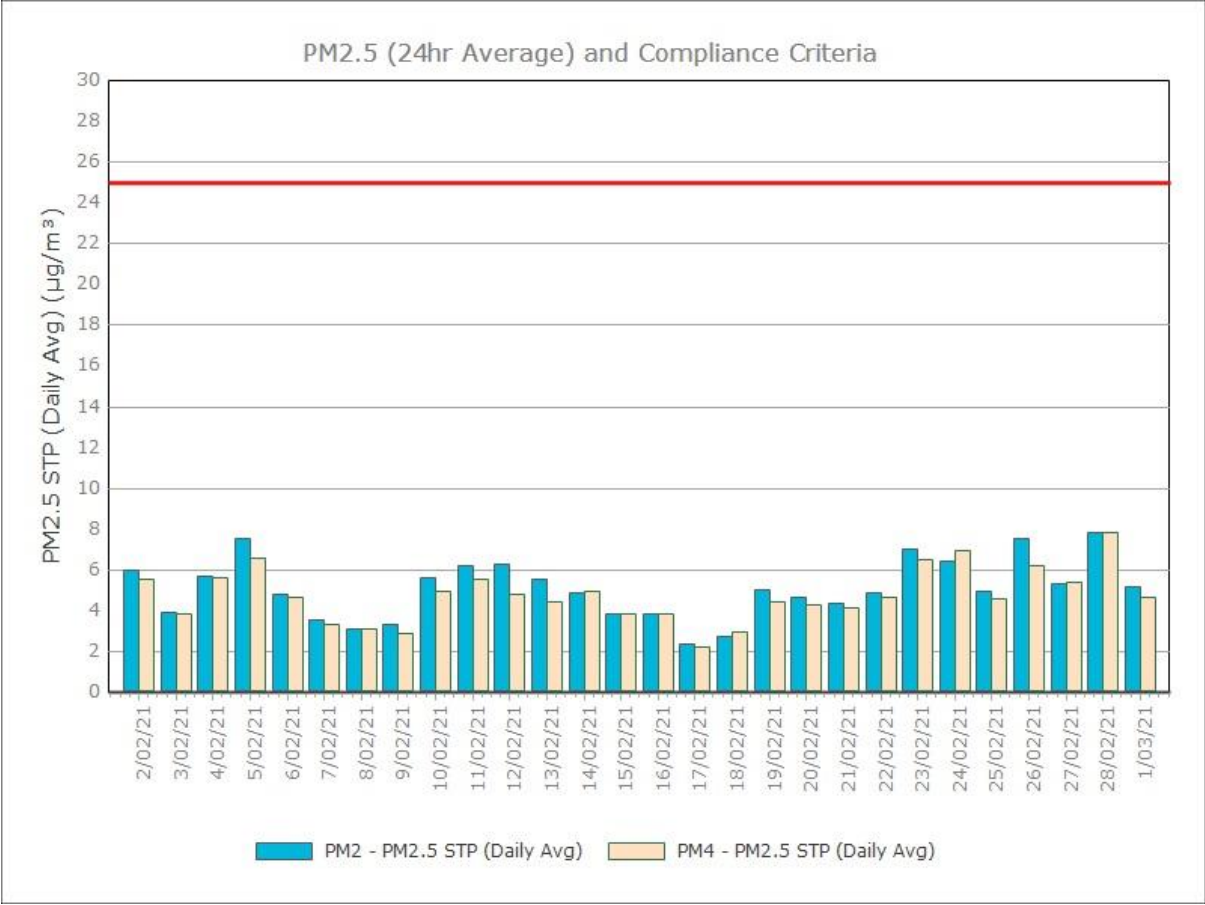
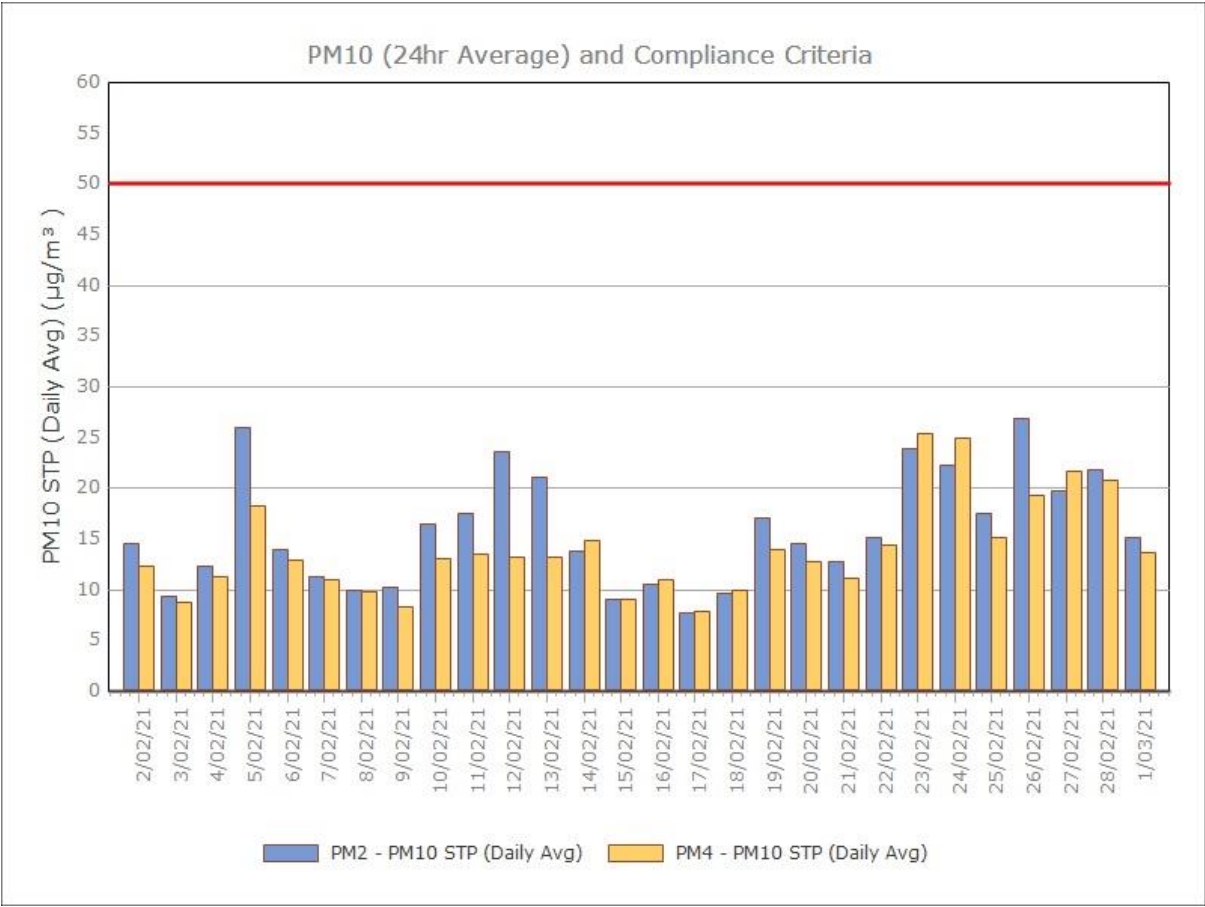
Particulate Monitoring

Monthly Monitoring Results

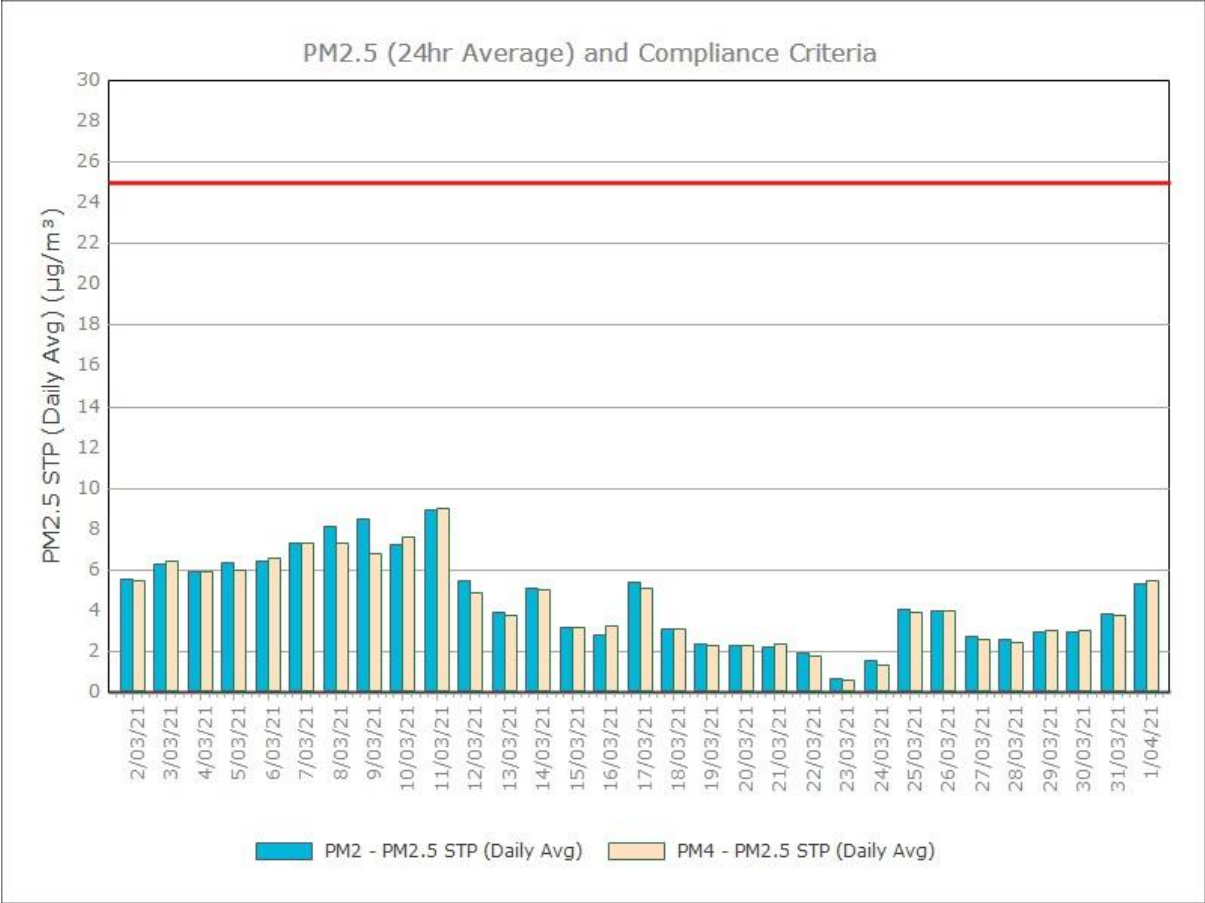
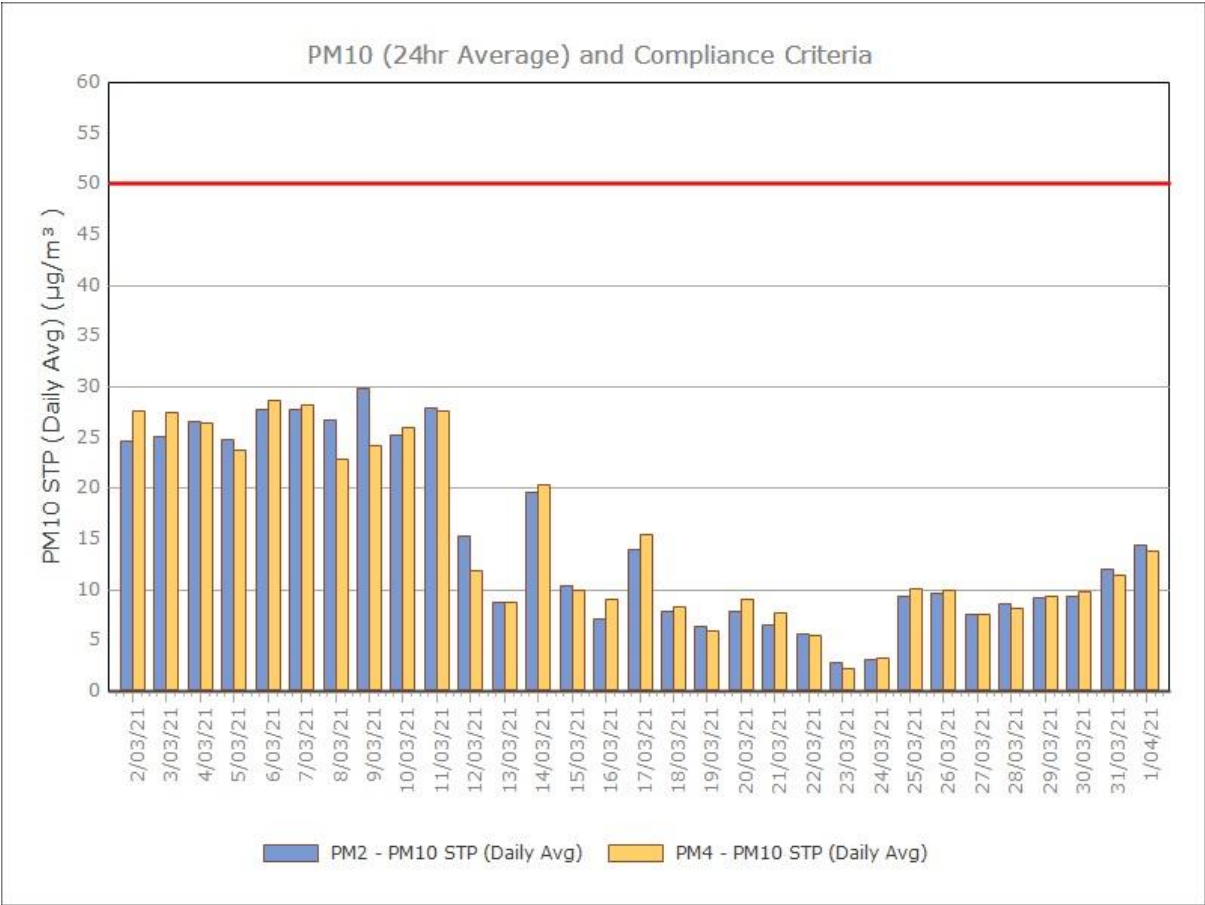
January 2021



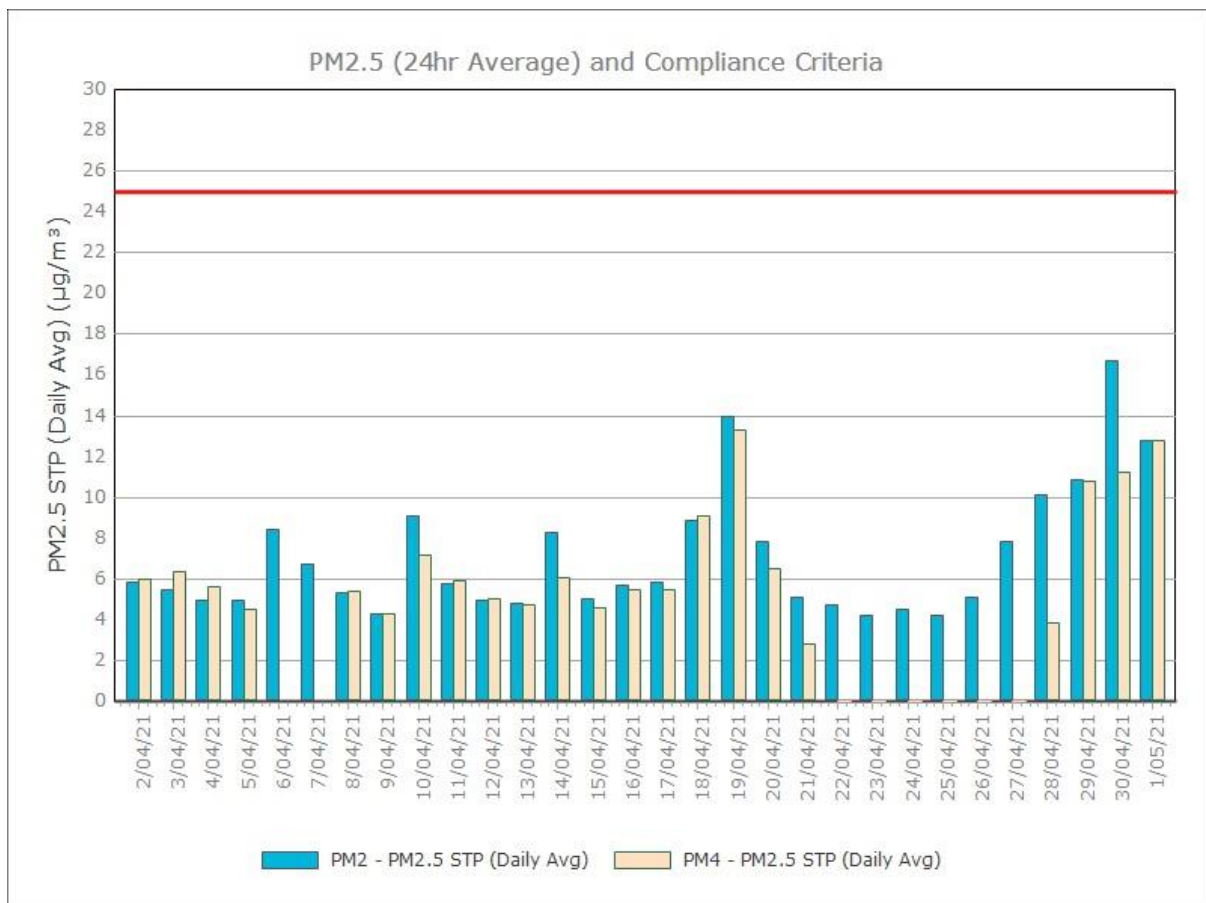
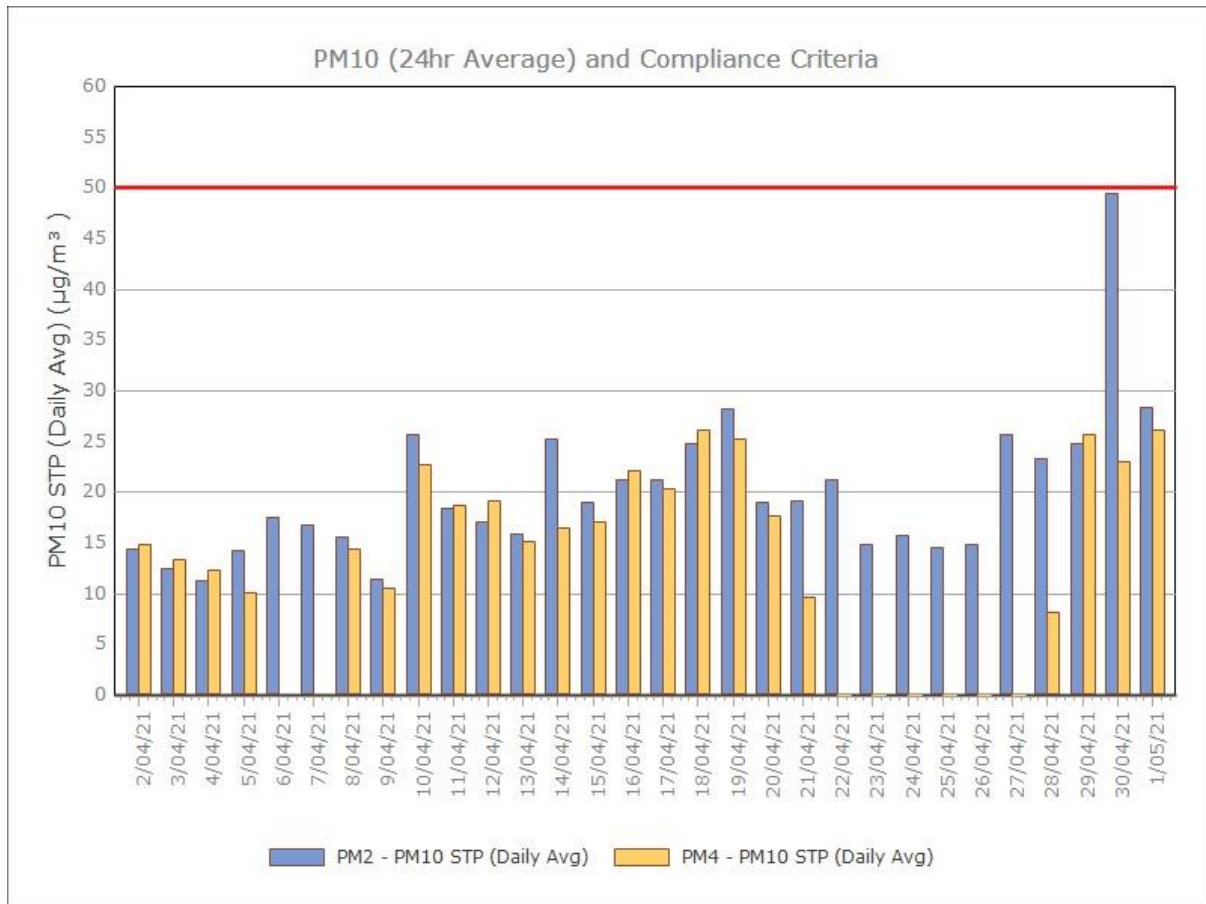
February 2021



March 2021



April 2021



May 2021

