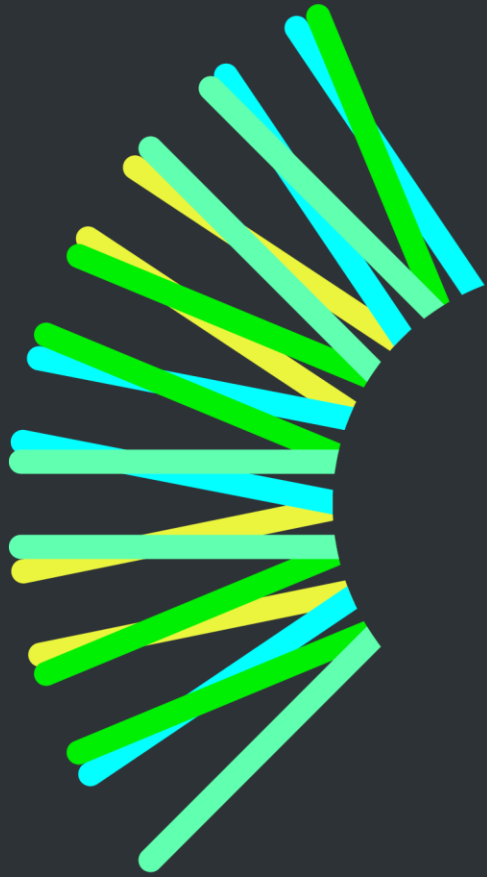


sunrise
energy metals

Project Execution Plan Modification

Community Consultative Committee
April 2021





Contents

- 01 Company Name Change
- 02 Sunrise Regional Update
- 03 Project Execution Plan Modification – Overview
- 04 Project Execution Plan Modification – Environmental Assessment
- 05 Project Execution Plan Modification – Timing
- 06 CCC Member Questions

01

Company Name Change



Company Name Change

- › Sunrise Energy Metals Limited (SEM)
 - Following shareholder approval in March, Clean TeQ Holdings Limited (ASX:CLQ) has now been renamed SUNRISE ENERGY METALS LIMITED
 - Trading commenced on 12th April on the ASX with the ticker “SRL”
 - A number of other subsidiary companies within the group have also had their names changed including Clean TeQ Sunrise Pty Ltd to SRL Ops Pty Ltd
 - The water business is planned to be demerged into a separate ASX listed company subject to shareholder approval in Q2
- › A 1 for 10 share consolidation has also recently been implemented



Name Change



02

Regional Sunrise Update



Regional Sunrise Update

Key Personnel Changes

- › Tim Kindred, Sunrise Project and Startup Director finished with the project in February.
- › Sunrise Regional Manager, Mike Wood has assumed overall management of the Sunrise project.

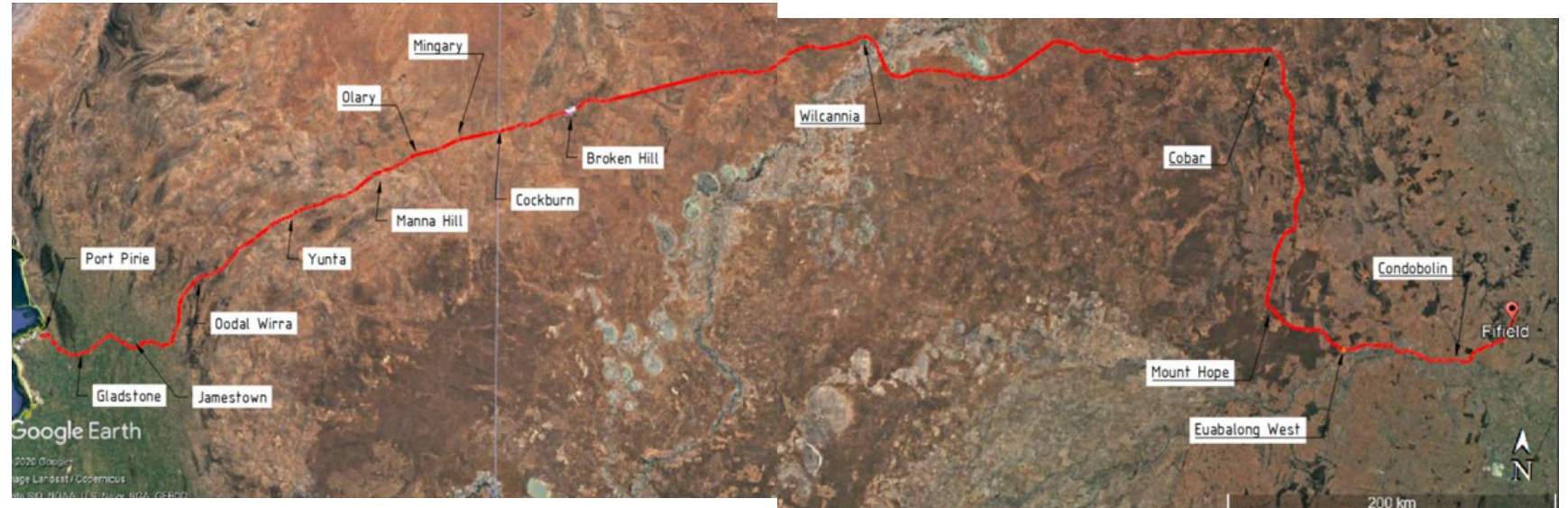
Power Supply

- › Biodiversity assessments undertaken along the easement in February. 50% of biodiversity assessment complete
- › 132kV Supply is required from Transgrid's Parkes substation direct to Sunrise
- › Negotiations ongoing with landholders along the proposed 132kV Transmission Line between Parkes & Sunrise
- › Connection agreement process underway with Network service providers
- › SEM announced in January that electricity supply for the project would be 100% renewable with no impact on project NPV
- › Study completed by AGL on behind the meter renewable energy options for SEM both with & without battery storage

Regional Sunrise Update

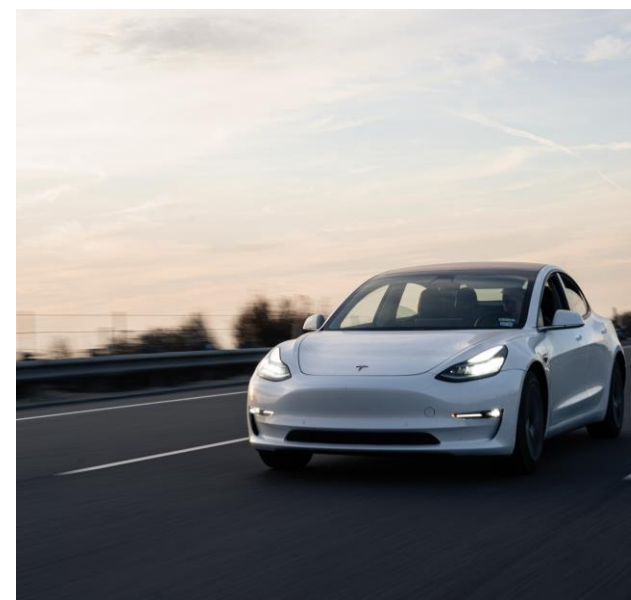
Oversized Transport Route

- › Approximately 150 oversized loads will be required to be delivered to Sunrise
- › SEM will establish an oversized / overmass transport route between Pt Pirie (SA) and Sunrise
- › Route survey completed
- › Planning underway to scope civil & electrical infrastructure modifications required along the route



03

PEP Modification - Overview



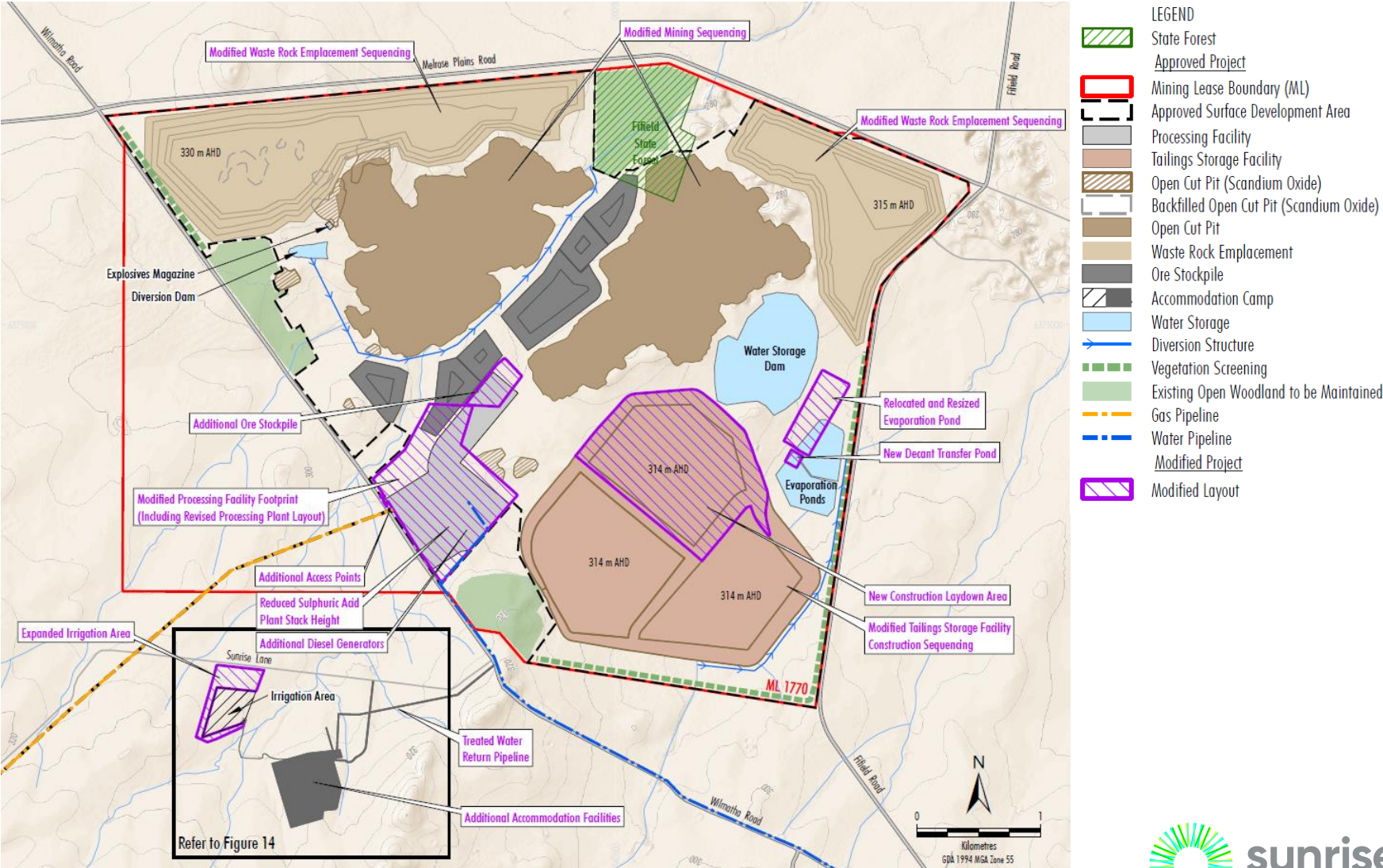
PEP Modification - Overview

Background

- › SEM has continued to review and optimise the Project design as part of preparations for the Project execution. The outcomes of this review are outlined in the Project Execution Plan.
- › The Project Execution Plan identified a number of changes to the approved mine and processing facility, accommodation camp, rail siding and road transport activities to optimise the construction and operations of the Project.
- › The DPIE has confirmed that the Project Development Consent could be modified under S4.55(2) of the EP&A Act to allow for the implementation of the Project changes identified in the Project Execution Plan (the Project Execution Plan Modification).
- › The DPIE would be the determining authority.

PEP Modification - Overview

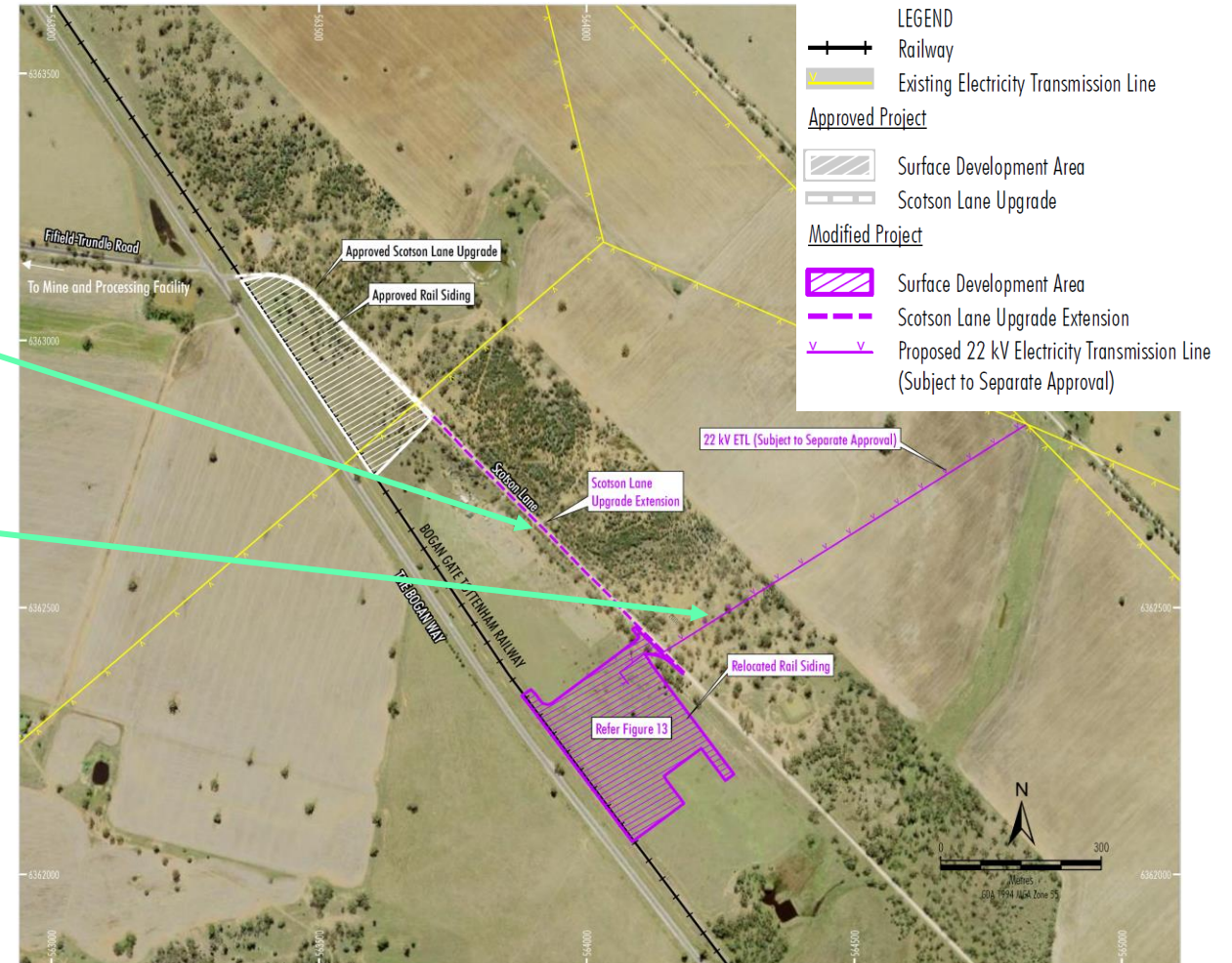
Mine Site and
Processing Facility



PEP Modification - Overview

Rail Siding

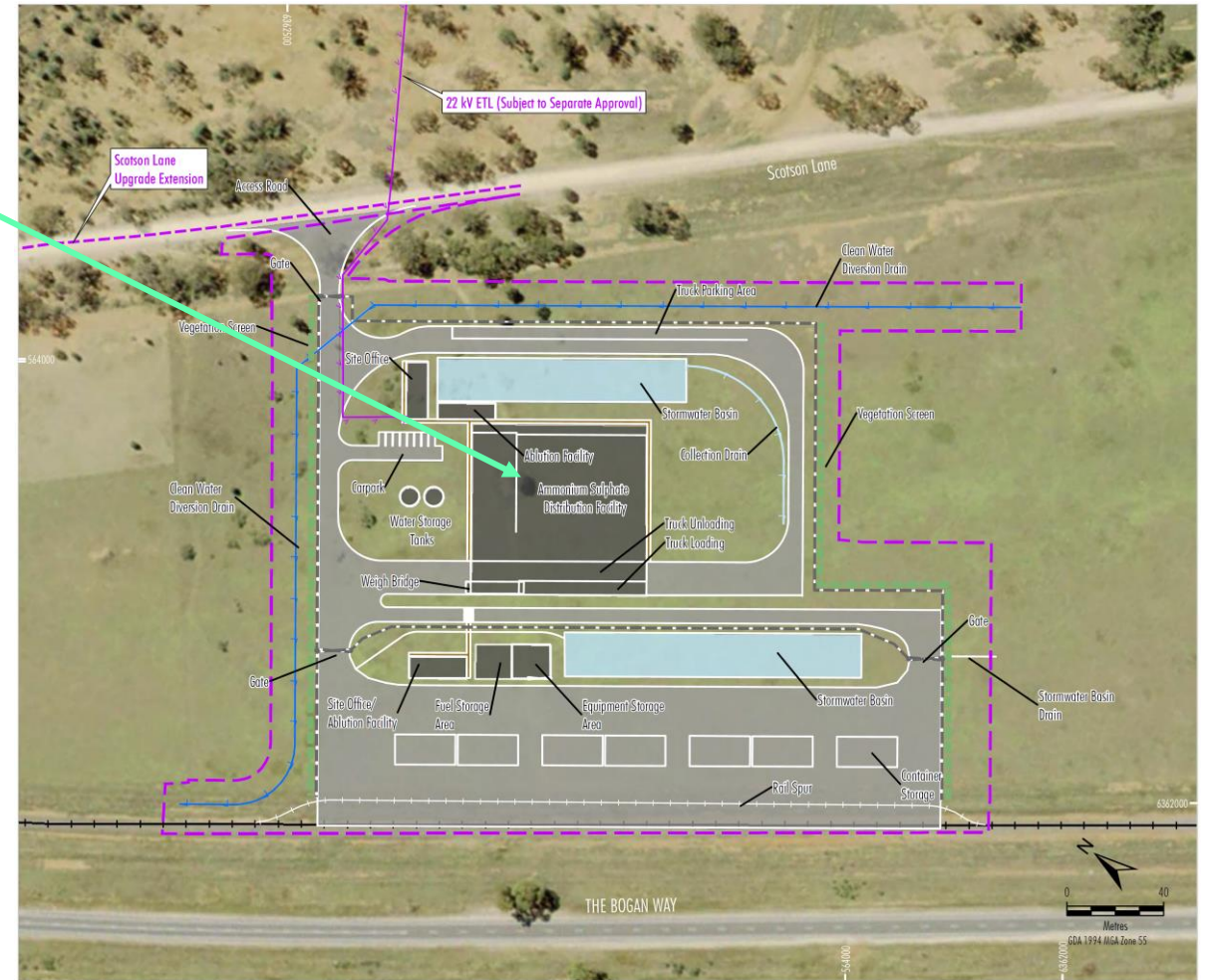
- › Relocation of the rail siding approximately 500 m south of the approved location to minimise rail and road traffic interactions at the rail level crossing on Scotson Lane.
- › Approximate 675 m extension of the approved Scotson Lane upgrade (8 m wide sealed pavement and 1 m gravel shoulders - described in the EIS).
- › 22 kV Electricity Transmission Line (subject to separate approval) to provide power to modified rail siding.



PEP Modification - Overview

Rail Siding

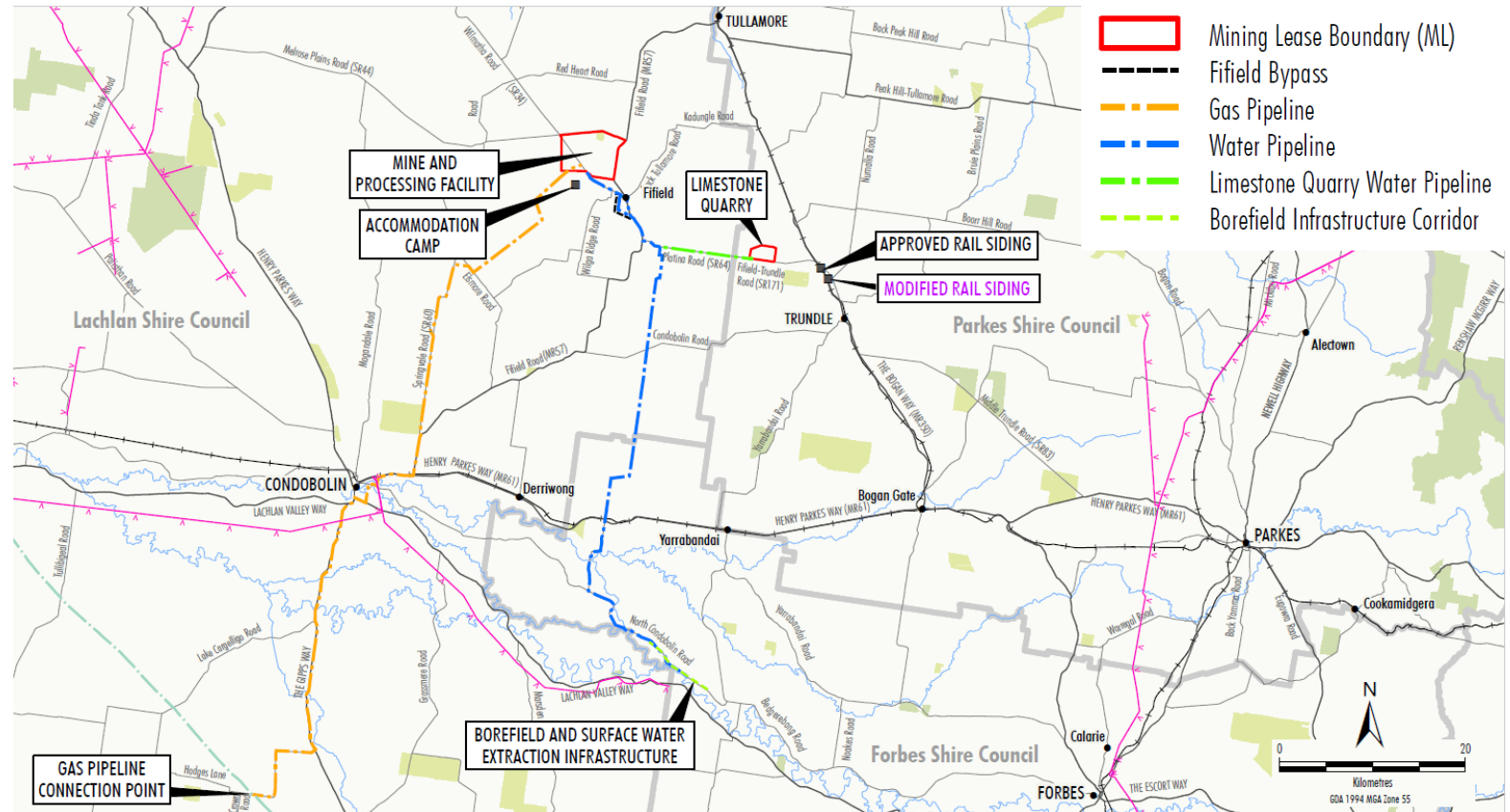
- › New ammonium sulphate storage and distribution facility – would supply broadacre cropping/other agricultural operations in the region by road.
- › Waste would be disposed of at an appropriately licensed landfill consistent with the Development Consent.



PEP Modification - Overview

Road Transport Activities

- › Changes to vehicle movements associated with the increased construction phase accommodation camp capacity and changes to heavy vehicle delivery requirements.
- › Changes to operational phase heavy vehicle movements to and from the rail siding associated with the transport of mineral product and ammonium sulphate.

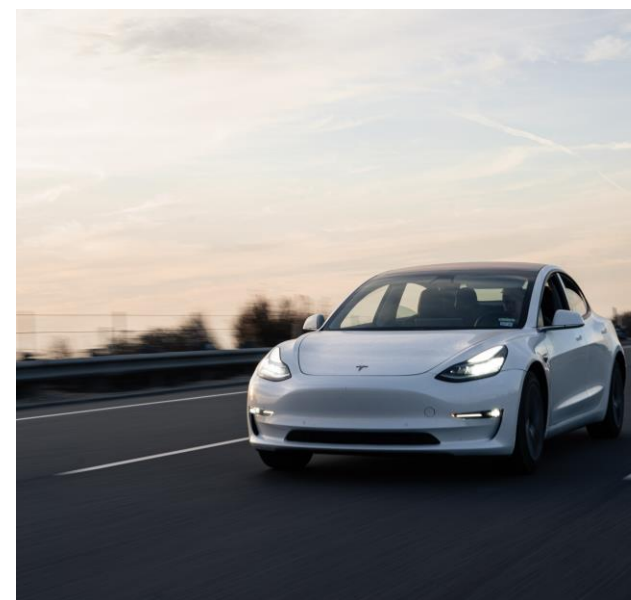


PEP Modification - Overview

Project Components - No Changes

- › Other mine and processing facility components (e.g. surface development area, mining method, waste rock management, processing method and rate, tailings management, mine facilities, water management concepts, rehabilitation strategy and operational workforce)
- › Other accommodation camp components (e.g. surface development area; operational phase capacity)
- › Other transport activities and transport infrastructure (e.g. the Fifield Bypass and approved road upgrades)
- › Limestone Quarry
- › Borefield, Surface Water Extraction Infrastructure
- › Water Pipeline
- › Gas Pipeline

PEP Modification – Environmental Assessment



PEP Modification – Environmental Assessment

Specialist Studies

The Modification Report will be supported by the following specialist studies:

- › Aboriginal Cultural Heritage Assessment
- › Biodiversity Review
- › Noise and Air Quality Assessment
- › Surface Water Assessment
- › Social Impact Review
- › Road Transport Assessment
- › Land Contamination Assessment

Other environmental aspects will be assessed in the Modification Report.

PEP Modification – Environmental Assessment

Aboriginal Cultural Heritage (Rail Siding Only)

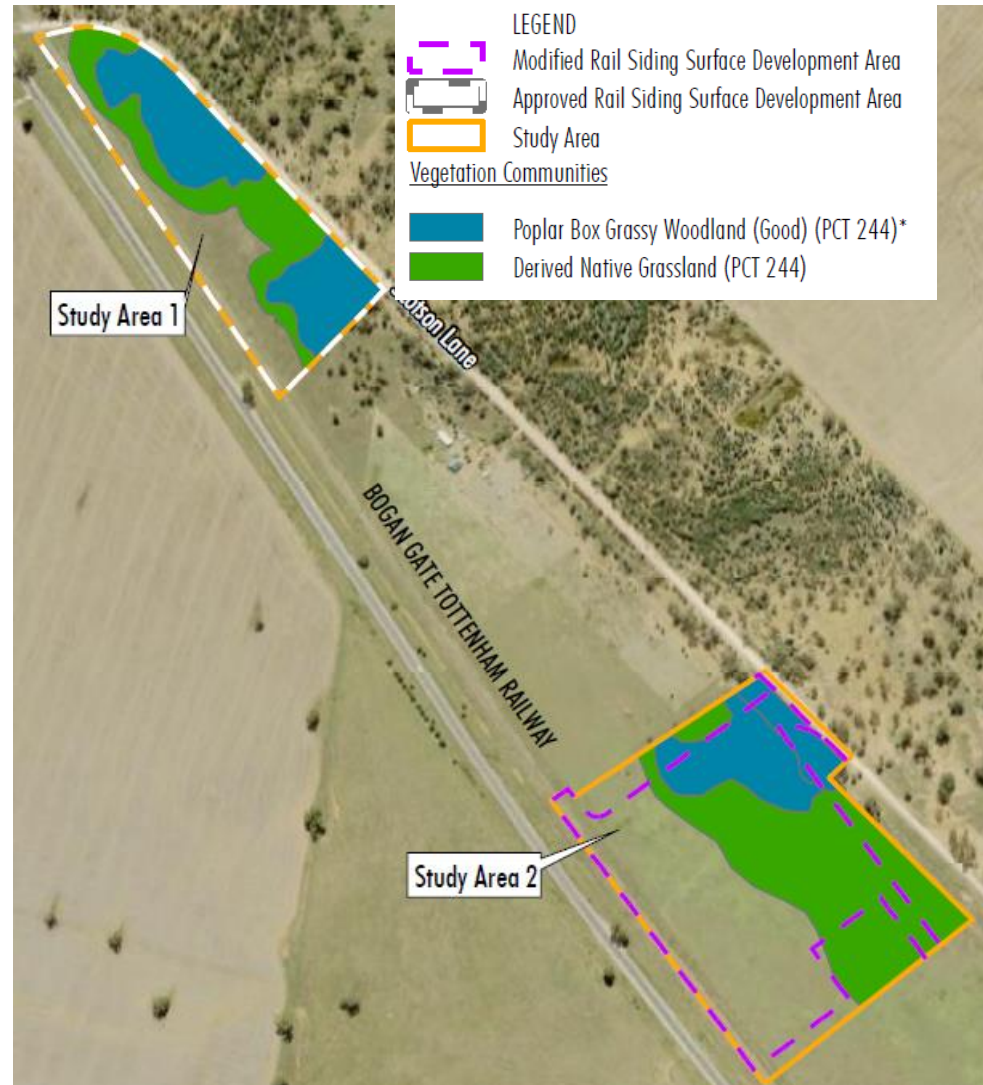
- › Aboriginal Cultural Heritage Assessment (ACHA) being prepared by Landskape in accordance with the relevant Heritage NSW guidelines.
- › Survey of modified rail siding undertaken on 23 February 2021 in consultation Registered Aboriginal Parties (RAPs) – no Aboriginal Heritage sites recorded.
- › RAP review period of draft ACHA ended 19 April - no comments received.



PEP Modification – Environmental Assessment

Biodiversity (Rail Siding Only)

- › Surveys by Biodiversity Australia (BA) found rail siding areas mostly comprised of cleared land/derived native grassland, with patches of Poplar Box Woodland.
- › BA concluded the Modification would not increase impacts on biodiversity values as defined by the BC Act, as there would be a reduction in native vegetation/habitat clearance.
- › NSW Biodiversity and Conservation Division provided in-principle support of BA's conclusion.



PEP Modification – Environmental Assessment

Noise and Air Quality

- › Noise and Air Quality Assessments being prepared by Renzo Tonin and Jacobs in accordance with contemporary NSW Government guidelines.
- › Maximum case construction and operational scenarios will be considered for both the modified mine and processing facility and rail siding.
- › Noise Assessment will include an assessment of road transport noise in accordance with the *Road Noise Policy*.



PEP Modification – Environmental Assessment

Surface Water

- › The Modification would not change the site water management performance measures (e.g. separation between clean and mine water, TSF and Evaporation Pond seepage controls, water storage design capacity, erosion and sediment controls).
- › No change to water supply sources
- › Site water balance being prepared by HEC to assess modified site water management performance:
 - water supply reliability
 - risk of uncontrolled off-site release of mine water
 - risk of disruption to operations
- › No additional water entitlement are expected to be required for the modified Project.

PEP Modification – Environmental Assessment

Social

- › The scope of the Social Impact Review is based on consultation with DPIE and includes a desktop study and consultation with the Lachlan, Parkes and Forbes Shire Councils.
- › Review will take into consideration potential incremental social impacts associated with the Modification, including:
 - Additional employment and business opportunities arising from increased construction workforce
 - Increased construction workforce and construction phase duration (e.g. potential local housing impacts; increased demand for education and health facilities).
 - Changes to approved road transport requirements.
 - Changes to approved amenity impacts.



SQUARE PEG
SOCIAL PERFORMANCE

PEP Modification – Environmental Assessment

Road Transport

- › Road Transport Assessment is being prepared by TTPP which considers:
 - Changes to vehicle movements associated with the increased construction phase accommodation camp capacity and changes to heavy vehicle delivery requirements.
 - Changes to operational phase heavy vehicle movements to and from the rail siding associated with the transport of mineral product and ammonium sulphate.
- › SEM will fund the Scotson Lane road upgrade extension.
- › No changes to other approved road and intersection upgrades proposed.

PEP Modification – Environmental Assessment

Land Contamination Assessment (Rail Siding Only)

- › Land Contamination Assessment has been prepared by Ground Doctor in accordance with the relevant NSW Government Guidelines.
- › Inspection of modified rail siding footprint conducted on 25 February 2021.
- › Ground Doctor concluded that the modified rail siding is suitable for the proposed use.



Ground Doctor Pty Ltd

05

PEP Modification - Timing



PEP Modification – Timing

Key Modification Milestones

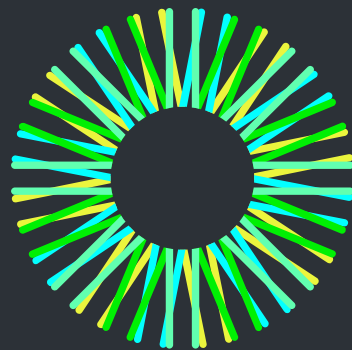
- › Meet with DPIE [complete]
- › Undertake specialist environmental assessments and consultation [underway]
- › Prepare Modification Report [underway]
- › Submit Modification Report to DPIE [mid 2021]
- › Public exhibition [three weeks after submission]
- › DPIE determination [late 2021]

06

CCC Member Questions



Thank you



sunrise
energy metals